



Collaborate



Control



Communicate



Converse

AV lecterns, cabinets, media walls, video walls, collaboration tables, huddle spaces, boardroom and meeting room tables, control desks, server racks, screen stands / trolleys and sound management solutions to name a few



Media & signage towers



University of the West of Scotland – Laboratory Media Towers

Quadra AV Furniture can design, manufacture and install all types of media towers.

The above project was for The University of West Of Scotland. The team at the University were already installing the laboratory benches when they asked Quadra in to discuss the screen housings.

The housings needed to hide all the cables and be totally enclosed. Once we have reviewed the benches we suggested using the Alliance Towers. These already incorporate a screen shield which hides the screen mounting and cable connections. All the cables were routed through the tower and into the bench as per their specification.

Quadra can make the signage and media towers can be manufactured from powder coated mild steel, or constructed in wood with either a melamine finish or a vinyl wrap.



Adaptive table & towers

Description: Adaptive FW - floor to wall

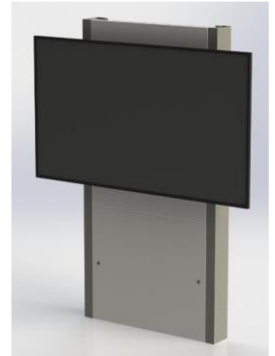
The Adaptive FW (floor to wall) is a versatile solution for a large screen. A video conference shelf can be mounted to the front. The front lower panel below the screen is removable via 2x cylinder locks. Steel frame work which is powder coated silver or black. The steel work can also be powder coated to any RAL colour at additional cost. Capacity for single screens from 40" to 85". Easy access to video conferencing codec or other equipment.

Optional extras include a VC shelf.
Sizes do not include screens.

Product Code:

ADAPTIVE-FW-MEL
ADAPTIVE-FW-VEN

Approximate size (mm)
Height 1800mm
Width 920mm
Length 195mm
No Base



Description: Adaptive single screen VC stand - free standing

The Adaptive FW (floor to wall) is a versatile solution for a large screen, you can add a shelf for a video conference camera to the front. The front lower panel below the screen is removable via 2x cylinder locks. Steel frame work which is powder coated silver or black. The steel work can also be powder coated to any RAL colour you specify but may be a small charge applied. Single screens from 40" to 85". Clean, simple design without clutter. Easy access to video conferencing codec or other equipment. Hard-wearing powder coat steel work and front / back panels in either standard melamine, veneers, vinyl wraps / colours.

Optional extras include a VC shelf.
Sizes do not include screens.

Product Code:

ADAPTIVE-FS-SIN-MEL
ADAPTIVE-FS-SIN-VEN

Approximate size (mm)
Height 1800mm
Width 920mm
Length 195mm

Base 1200 x 500mm



Description: Adaptive double screen VC stand - free standing

The Adaptive FW (floor to wall) is a versatile solution for a large screen, you can add a shelf for a video conference camera to the front. The front lower panel below the screen is removable via 2x cylinder locks. Steel frame work which is powder coated silver or black. The steel work can also be powder coated to any RAL colour you specify but may be a small charge applied. Single screens from 40" to 85". Clean, simple design without clutter. Easy access to video conferencing codec or other equipment. Hard-wearing powder coat steel work and front / back panels in either standard melamine, veneers, vinyl wraps / colours.

Optional extras include a VC shelf.
Sizes do not include screens.

Product Code:

ADAPTIVE-FS-DOU-MEL
ADAPTIVE-FS-DOU-VEN

Approximate size (mm)
Height 1800mm
Width 920mm
Length 195mm

Base 1200 x 750mm



Description: Adaptive table

The Adaptive table has all the benefits that the above single units have but with the added flexibility of a bespoke designed table to suite the shape of your room and as many people as required.

Allows all cable routes to the screen to be hidden under the table top.

Ideal for where the screen is not fixed to the wall.

Other tables sizes and shapes are available upon request.

Chairs are not included, for chair options and pricing please see the chair section

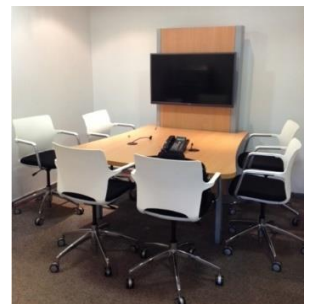
Pricing is for stand and table only, Screens, cables and connections via your integrator

Product Code:

ADAPTIVE-TBL6-MEL
ADAPTIVE-TBL6-VEN

Approximate size (mm)
Height 1800mm
Width 1600mm
Length 1600mm

Desk Height 730mm





Description: Alliance tower 1

Alliance VC tower. The tower can have a 49" or 55" screen, there is also an adjustable Video Conference camera shelf. The tower has a steel shield which is removable for service and makes for easy install. The column has a rear removable panel for cable access.

The front has brush strip in the vertical for cables from the adjustable CVC camera.

The base is a flat steel plate and there are fixing holes through the base inside the column.

To the top is a bracket for fixing back to the wall if required depending on screen size and weight.

Product Code:

ALL-T1 (single 49-55" Screens)

Approximate size (mm)

Height	1846mm
Width	1340mm
Depth	500mm



Description: Alliance tower 2

Alliance VC tower. The tower can have a 65" or 75" screen, there is also an adjustable Video Conference camera shelf. The tower has a steel shield which is removable for service and makes for easy install. The column has a rear removable panel for cable access.

The front has brush strip in the vertical for cables from the adjustable CVC camera.

The base is a flat steel plate and there are fixing holes through the base inside the column.

To the top is a bracket for fixing back to the wall if required depending on screen size and weight.

Product Code:

ALL-T2 (single 65-75" Screens)

Approximate size (mm)

Height	1846mm
Width	1775mm
Depth	500mm



Description: Alliance tower 3

Alliance VC tower. The tower can have dual 49" or dual 55" screens mounted, there is also an adjustable Video Conference camera shelf. The tower has a steel shield which is removable for service and makes for easy install. The column has a rear removable panel for cable access.

The front has brush strip in the vertical for cables from the adjustable CVC camera.

The base is a flat steel plate and there are fixing holes through the base inside the column.

To the top is a bracket for fixing back to the wall.

Product Code:

ALL-T3 (dual 49-55" Screens)

Approximate size (mm)

Height	1846mm
Width	2575mm
Depth	500mm



Description: Laboratory Alliance tower

Alliance screen tower for laboratory's. The tower can have a 49" or 55" screen mounted, to the front low level is a cutout for cables to run from the tower into the laboratory bench.

There are also fixing holes either side of the cut out for bolting to the bench.

The tower has a steel shield which is removable for service and makes for easy install. The column has a rear removable panel for cable access. The front has brush strip in the vertical for cables from the adjustable CVC camera. The base is a flat steel plate and there are fixing holes through the base inside the column.

Will need to be bolted to a bench as no base plate!

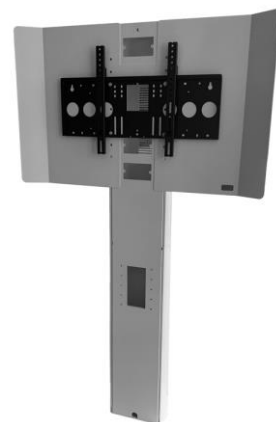
Made to order and minimum order od 10 units.

Product Code:

ALL-T-LAB (single 49-55" Screens)

Approximate size (mm)

Height	1846mm
Width	1340mm
Depth	500mm





Description: Digi tower

Bespoke housing for digital signage or point-of-sale. Available in portrait format
A modern attractive design available to suit any size of screen.

Popular screen sizes are 42" - 46" and 65" but smaller/larger sizes available. Stable and rigid construction. Removable rear access panel with ventilation grills. Various fascia colours, melamine finishes for the base and rear frame. Vinyl wrap to the front fascia in any RAL colour. Fitted with glides/feet.

Logo can be added below the screen
Housing only - screens and other AV hardware not supplied.

Product Code:

DIGI42P-MEL (portrait)
DIGI46P-MEL (portrait)
DIGI55P-MEL (portrait)
DIGI65P-MEL (portrait)



Description: 55" Landscape digi tower

Bespoke housing for digital signage or point-of-sale. Available in landscape format
A modern attractive design available to suit any size of screen.

Popular screen sizes are 42" - 46" and 55" but smaller/larger sizes available. Stable and rigid construction. Removable rear access panel with ventilation grills. Various fascia colours, melamine finishes for the base and rear frame. Vinyl wrap to the front fascia in any RAL colour. Fitted with glides/feet.

Logo can be added below the screen
Housing only - screens and other AV hardware not supplied.

Product Code:

DIGI55L-MEL (landscape)



Description: Bespoke digi towers

Here at Quadra AV Furniture we can design a bespoke Digi tower for reception area or foyer. It can be a custom size, shape or finish.

The Digi tower below right features a coloured back ground behind the screen which can match your corporate branding.

The Digi tower below left is a full circle with 3x screens so people coming into the foyer or reception can see a screen from any direction.

We can create any unit with a bespoke finish to specification whilst allowing for the integration of all audio visual components.

Your logo can be added below the screen
Housing only - screens and other AV hardware by your integrator

Product Code:

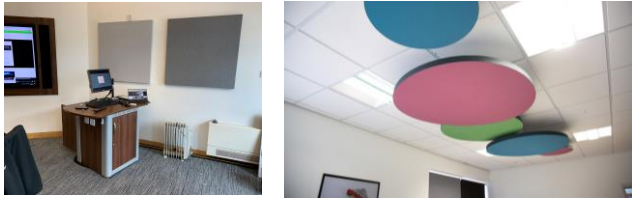
DIGI55L-MEL (landscape)





Comprehensive range available

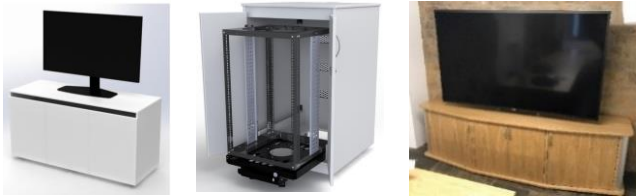
Book 1 - Acoustics



Book 2 & 3 - Lecterns



Book 4 – Cabinets & Credenzas



Book 5 – Tables & Desks



Book 6 – Control room & Enquiry Room



Book 7 – Media Walls & Screen Surrounds



Book 8 – Collaboration Tables & Towers



Book 9 – Media & Signage Towers



Book 10 – Piqo Trolleys & Stands



Book 11 – Kaigi Booth's & Media Walls



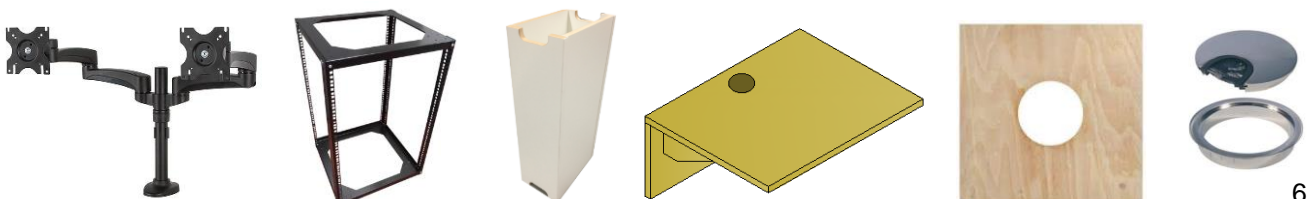
Book 12 – Connectivity



Book 13 – Task & Meeting Chairs



Book 14 - Peripherals





Description: Standard Melamine



Maple 0375



Windsor Oak 1929



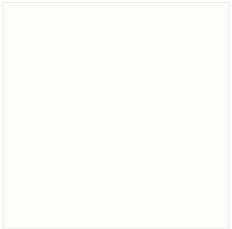
Bavaria Beech 0381



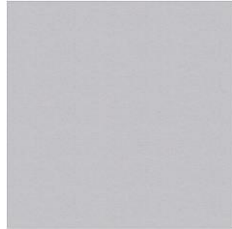
Aida Walnut H3704



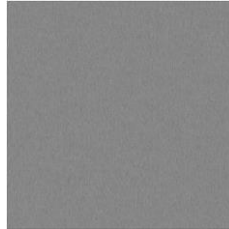
Verona Cherry H1615



White K101



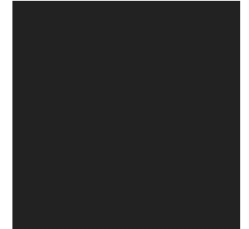
Stone Grey 0112



Dust Grey U732

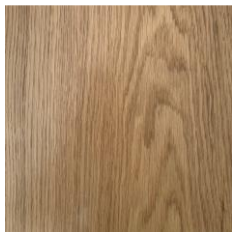


Graphite Grey 0162



Black 0190

Description: Real Wood Veneer



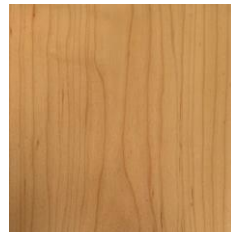
European Oak



American White Oak



Crown Cut Ash



Crown Maple



Crown American Walnut

Quadra AV Furniture source the highest quality hardwoods and real wood veneers. The varying grain and figure of these woods genuinely emphasise the natural beauty and individuality of the material. No two pieces of timber are identical and there will be natural variations in the grain, knots and colouring. This arises from natural minerals in the wood.



If you have a specific finish in mind please contact us with details and we will source samples for you.

We work with all the main manufacturers including Kronospan, Egger and Formica.

We also work with specialist veneer companies who have a vast array of stock from exotic, bold, warm, fresh and modern veneers.

Decorative laminate is a mainstay of commercial interior design and Quadra can offer the latest designs and textures as well as classic best sellers.



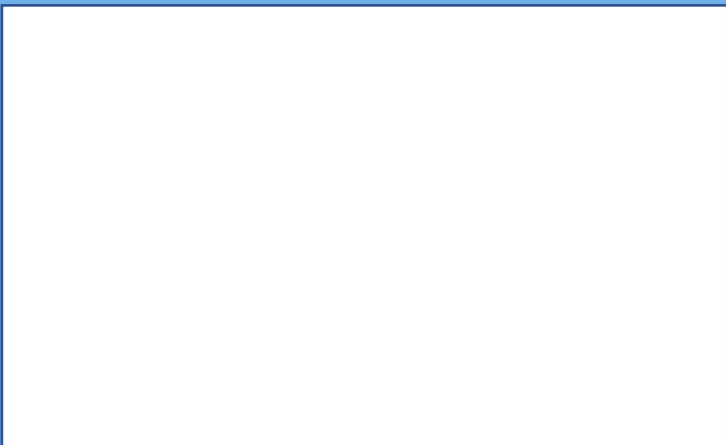
Over 26 years of experience within the audio visual furniture industry and with a reputation for being friendly and reliable to deal with, we treat every project with the same level of importance.

Our furniture is manufactured at our York facility which you are welcome to visit and see your project in the build process or just to have a look around.

You will be able to see the high level of investment in technology and the deep passion we have for what we do.

Quadra AV Furniture Ltd
Head Office : Glaisdale Road,
Northminster Business Park,
Upper Poppleton, York, YO26 6QT

Web - www.qavf.co.uk
Telephone - 01904 528 519
Email - enquiries@qavf.co.uk



Quadra Concepts UK Limited trading as Quadra AV Furniture is registered in England and Wales.
Reg No. 06322818 – VAT No. GB 916 3405 38

