

Collaborate



Control



Communicate



Converse

AV lecterns, cabinets, media walls, video walls, collaboration tables, huddle spaces, boardroom and meeting room tables, control desks, server racks, screen stands / trolleys and sound management solutions to name a few



Media walls & screen housings



University of Greenwich Student Union Bar

Bespoke media walls

We can design media wall solutions to fit within boardrooms, meeting rooms and reception areas. These can incorporate the screens and audio visual equipment including equipment racks, VC cameras, speakers or storage.

Bespoke screen surrounds

For screens which are mounted direct to the wall where the brackets can be seen behind them, we can design a bespoke surround to either fit behind the screen to cover the brackets, or we can frame the screen like in the image shown below right.





Description: Interactive 55" unit table / cabinet.

Unit to accommodate a 55" display (screen and bracket to be confirmed, supplied and installed by the integrator) Flat cabinet top for the screen so users can stand all around the perimeter. 4x carpet castors. Locking doors. Adjustable shelving or optional Quadra open frame rack inside. Cable access throughout.

Large range of melamine and veneer finishes available.

Optional extras include 10U or 12U open frame rack (please see peripherals section for information and pricing)

Product Code:

55DISPLAY-MEL

55DISPLAY-VEN

Approximate size (mm)

950 x 1295 x 766 (HxWxD)



Description: Interactive 55" cabinet with the screen at a 30 degree angle.

Unit to accommodate a 55" display (screen and bracket to be confirmed supplied and installed by the integrator) Cabinet top set at a 30 degree angle for users. 4x carpet castors. Locking doors. Adjustable shelving or optional Quadra open frame rack inside. Cable access throughout.

Large range of melamine and veneer finishes available.

Optional extras include 10U or 12U open frame rack (please see peripherals section for information and pricing)

Product Code:

55DISPLAY30-MEL

55DISPLAY30-VEN

Approximate size (mm)

1320 x 1295 x 766 (HxWxD)



Description: Interactive 55" cabinet which can be flat or angled up to 45 degrees.

Unit to accommodate a 55" display (Screen and bracket to be confirmed supplied and installed by the integrator). Screen can be altered from flat to 45 degree by the touch of a button via 2x electric rams fitted within the cabinet. 4x carpet castors. Locking doors. Adjustable shelving or optional Quadra open frame rack inside. Cable access throughout.

Large range of melamine and veneer finishes available.

Optional extras include 10U or 12U open frame rack (please see peripherals section for information and pricing)

Product Code:

55H/ADJ-DISPLAY45-M

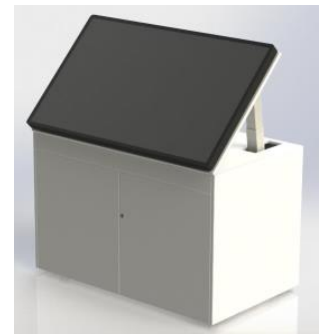
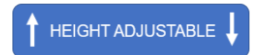
55H/ADJ-DISPLAY45-V

Approximate size (mm)

950 x 1295 x 766

Height when screen raised

1450mm(HxWxD)



We can design and create bespoke versions of the above to accommodate different sized screens. Contact us for details.

Description: Single screen media wall with storage cabinets

The media wall is designed for a meeting room or boardroom to house all your AV needs.

4 compartments in the base unit all have adjustable shelves. 4 doors have touch latches and fully adjustable hinges. The 2 outer doors will be solid whereas the 2 centre doors will have a smoked perspex panel inset for infra-red control. To the upper section will be a cabinet to house the customers screen, this is designed for an 82" screen.

Large range of melamine and veneer finishes available.

Optional extras include 10U or 12U open frame rack (please see peripherals section for information and pricing)

(Screen and bracket to be supplied and installed by the integrator unless otherwise requested)

Product Code:

MEDIACAB-WALL-MEL

MEDIACAB-WALL-VEN

Approximate size (mm)

2330 x 2492 x 635 (HxWxD)





Description: Media wall.

Single screen media walls.

This media wall is a standard product for various sizes of screens, as all screens vary in size we would need to know the model number and bracket to make sure the screen will fit into the unit. 2x opening doors to the lower section for storage. Removable centre panel which can incorporate a VC camera aperture. If you do not need an aperture for a video conference camera but might want VC at a later date we would fit a cloth covered panel so it is flush fitting with the panels and removable for a later date. Screen is set flush with the front panels.

Large range of melamine and veneer finishes available.

Screen and bracket normally to be supplied by integrator if you wish for us to supply please let us know your requirements and we will quote.

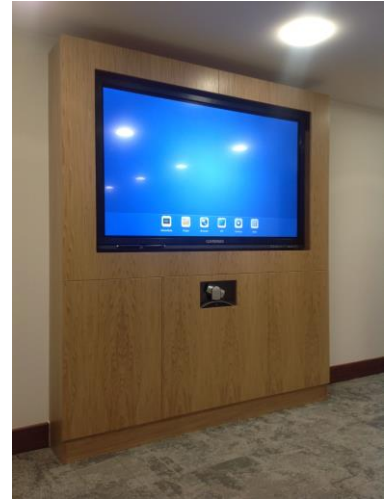
Unit width approx. 55" = 1800mm, 70" = 2100mm, 85" = 2400mm, 98" = 2400mm

Product Code:

55MEDIA/WALL-MEL
 55MEDIA/WALL-VEN
 70MEDIA/WALL-MEL
 70MEDIA/WALL-VEN
 85MEDIA/WALL-MEL
 85MEDIA/WALL-VEN
 98MEDIA/WALL-MEL
 98MEDIA/WALL-VEN

Approximate size (mm)

(HxD)=Screen
 2360 x 300 = 55"
 2360 x 300 = 70"
 2360 x 300 = 85"
 2700 x 300 = 98"



Description: Single screen wall cabinet.

Aviance style screen unit with base unit to house an 84" screen. (model and sizes to be confirmed) mounted on a fixed bracket.

Excludes screen and bracket.

Large range of melamine and veneer finishes available.

We can design a housing like this for any size screen, contact us for details.

Product Code:

SCRNCAB-MEL
 SCRNCAB-VEN

Approximate size (mm)
 1730 x 2565 x 210 (HxWxD)



Description: Wall mounted front projection screen

Hang on the wall front projection screen.

These screen units hang on the wall via 4 brackets.

The screen is a white fabric material which is stretched across our wooden frame, then an outer wooden frame with a 35mm black masking detail is fitted over.

Large range of melamine and veneer finishes available with a black painted masking between the frame and screen.

Code- 60SCR01	View size 1525mm x 1145mm	Overall size 1674mm x 1293mm
Code- 72SCR01	View size 1830mm x 1370mm	Overall size 1980mm x 1520mm
Code- 84SCR01	View size 2135mm x 1600mm	Overall size 2285mm x 1750mm
Code- 96SCR01	View size 2430mm x 1820mm	Overall size 2580mm x 1970mm

Product Code:

60SCR01-MEL
 60SCR01-VEN
 72SCR01-MEL
 72SCR01-VEN
 84SCR01-MEL
 84SCR01-VEN
 96SCR01-MEL
 96SCR01-VEN



Sizes are approximate



Screen units

Description: Video conferencing credenza with single screen.

3 compartment cabinet with Piquo stand for a single screen up to 65".
3 compartment cabinet with push latches and adjustable shelving. Piquo QC5585FC TV stand on top. Panel to hide cables. Piquo stand to be fixed back to the wall via a bracket behind the screen which supports the screen in a lateral movement.
The cabinet is sat on feet / glides.
Large range of melamine and veneer finishes available.

The doors can have handles and locks if required but cant have these if touch latches are preferred.
Screen bracket is included, screen is **not** included.

Product Code:

VC-TRICAB/PIQO-SS-M
VC-TRICAB/PIQO-SS-V

Approximate size (mm)
2007 x 1645 x 335 (HxWxD)



Description: Video conferencing credenza twin screen.

3 compartment cabinet with Piquo stand for a dual screens up to 55".
3 compartment cabinet with standard bow handles and locks. Internal options are adjustable shelves or a Quadra open frame rack. Piquo QC5585FC TV stand on top. Panel to hide cables. Piquo stand to be fixed back to the wall via a bracket which is behind the screen which supports the screen in a lateral movement.
The cabinet is sat on feet / glides.
Large range of melamine and veneer finishes available.
Optional extras include 10U or 12U open frame rack (please see peripherals section for information and pricing)

The doors can be supplied with push latches if they are preferred.
Screen bracket is included, screen is **not** included.

Product Code:

VC-TRICAB/PIQO-DS-M
VC-TRICAB/PIQO-DS-V

Approximate size (mm)
1900 x 1880 x 600 (HxWxD)



Description: Video conferencing credenza twin screen.

4 compartment cabinet with Piquo stand for a dual screens up to 55".
4 compartment cabinet has push latches on the doors. Inside the cabinet are adjustable shelves for storage. 2x Piquo QC5585FC TV stands on top. Panels to hide the cables.
The Piquo stands are fixed back to the wall via a bracket which is behind the screen which supports the screen in a lateral movement. The cabinet is sat on feet / glides.
Large range of melamine and veneer finishes available.

The doors can have handles and locks if required but can't have these if touch latches are preferred.
Screen brackets are included, screens is **not** included

Product Code:

VC-QUADCAB/PIQO-DS-M
VC-QUADCAB/PIQO-DS-V

Approximate size (mm)
1710 x 2175 x 335 (HxWxD)





Description: Height adjustable 75" screen unit.

Mobile height adjustable screen credenza with electrical height adjustable screen which when lowered is hidden away inside the credenza. Wooden cabinet with alloy corner posts. Doors are on fully adjustable hinges, complete with lock and D handle. Carpet castors. This credenza is designed with a Samsung QM-F Series 75" display inside that can be raised for viewing and lowered back in. Large range of melamine and veneer finishes available.

The credenza is based on the same styling as the Academy Eco so if needed it could be matched a lectern or AV cabinet.

Product Code:

75H/AJSCRNUNIT-DS-M
75H/AJSCRNUNIT-DS-V

Approximate size (mm)
1170-2175 x 2151 x 650 (HxWxD)

↑ HEIGHT ADJUSTABLE ↓



Description: Credenza with Pigo screen mount

Fixed screen credenza utilising the Pigo screen mounts and brackets. Wooden cabinet with alloy corner posts. Doors are on fully adjustable hinges, complete with lock and D handle. Carpet castors. This credenza is designed with a Samsung QM-F Series 75" display, as it is fixed above the cabinet you can fit any screens from 55" to 80". please note the bigger the screen it might be wider than the cabinet, but we can alter the size to accommodate your screen widths. Large range of melamine and veneer finishes available.

The credenza is based on the same styling as the Academy Eco so if needed it could be matched a lectern or AV cabinet.

Product Code:

75SCRNUNIT-DS-MEL
75SCRNUNIT-DS-VEN

Approximate size (mm)
2038 x 1700 x 750 (HxWxD)



Description: Aviance screen surround.

Custom designed wall mounted screen housings and fascia's. Available to suit any size of screen in both landscape or portrait. Popular screen sizes are 42" - 46" and 65" but smaller/larger sizes available. Speakers can be accommodated. Various fascia colours, veneers or melamine finishes available for the base and rear frame. Vinyl wrap to the fascia or in any painted RAL colour

Your logo can be added below the screen.

Housing only - screens and other AV hardware not supplied.

Product Code:

AVIANCE42-MEL
AVIANCE42-VEN
AVIANCE46-MEL
AVIANCE46-VEN
AVIANCE52-MEL
AVIANCE52-VEN





Media wall & surrounds

Description: LED tile walls.

A new option for large video walls are LED tiles instead of LCD screens. By using the LED tiles loses the black bezel providing a full image without the black lines of individual screens. Here at Quadra we have designed and built wooden media walls to house and frame the new tiles in lecture theatres and receptions.

We can convert rear projection screen walls by removing the Fresnel screen and creating a flat blanking wall for the new LED tiles to be fitted. This will not effect the look of the existing wall ensuring your design is not effected.



Description: Bespoke screen surrounds.

For screens which are mounted direct to the wall where the brackets can be seen behind them, we can design a bespoke surround to either fit behind the screen to cover the brackets, or we can frame the screen like in the image shown to the right.

If you require this service we will visit site, discuss all requirements, finishes and take measurements.



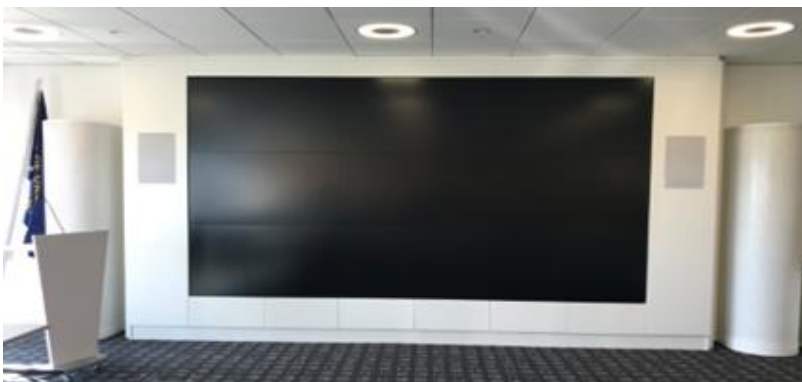
Description: Bespoke media walls.

Media walls are increasingly being incorporated into boardrooms, reception areas and even lecture theatres. At Quadra we have created bespoke solutions which can accommodate multiple screens, VC camera's, speakers, racks or in fact any audio visual equipment required.

We offer a free design service, to provide a comprehensive quotation complete with photorealistic 3D visuals that allows us to quickly move to the manufacturing phase.

All units are available in standard melamine or veneer and we can also provide a vinyl wrap. We are happy to visit onsite to discuss requirements and take any relevant dimensions in situ.

Here are a selection of walls we have previously designed and installed.





Description: Standard Melamine



Maple 0375



Windsor Oak 1929



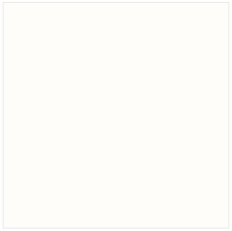
Bavaria Beech 0381



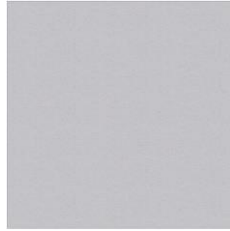
Aida Walnut H3704



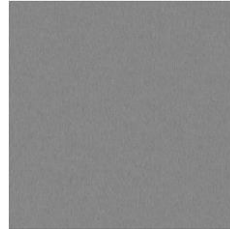
Verona Cherry H1615



White K101



Stone Grey 0112



Dust Grey U732

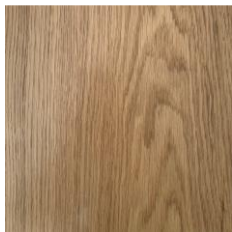


Graphite Grey 0162



Black 0190

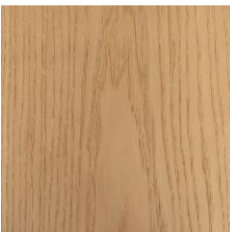
Description: Real Wood Veneer



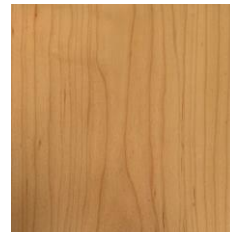
European Oak



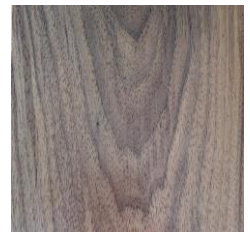
American White Oak



Crown Cut Ash



Crown Maple



Crown American Walnut

Quadra AV Furniture source the highest quality hardwoods and real wood veneers. The varying grain and figure of these woods genuinely emphasise the natural beauty and individuality of the material. No two pieces of timber are identical and there will be natural variations in the grain, knots and colouring. This arises from natural minerals in the wood.



If you have a specific finish in mind please contact us with details and we will source samples for you.

We work with all the main manufacturers including Kronospan, Egger and Formica.

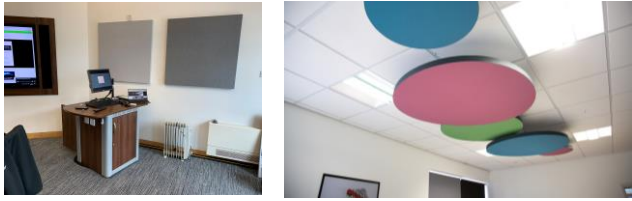
We also work with specialist veneer companies who have a vast array of stock from exotic, bold, warm, fresh and modern veneers.

Decorative laminate is a mainstay of commercial interior design and Quadra can offer the latest designs and textures as well as classic best sellers.



Comprehensive range available

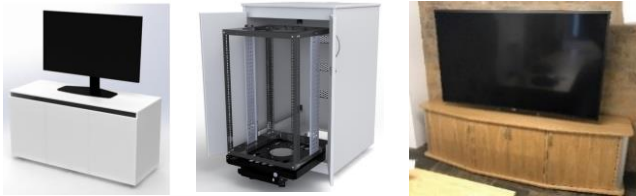
Book 1 - Acoustics



Book 2 & 3 - Lecterns



Book 4 – Cabinets & Credenzas



Book 5 – Tables & Desks



Book 6 – Control room & Enquiry Room



Book 7 – Media Walls & Screen Surrounds



Book 8 – Collaboration Tables & Towers



Book 9 – Media & Signage Towers



Book 10 – Piqo Trolleys & Stands



Book 11 – Kaigi Booth's & Media Walls



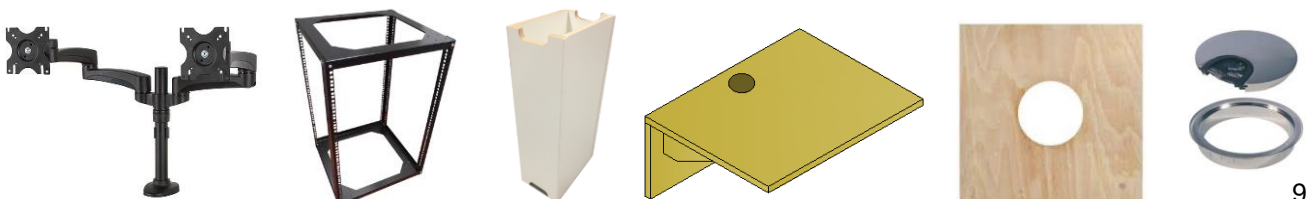
Book 12 – Connectivity



Book 13 – Task & Meeting Chairs



Book 14 - Peripherals





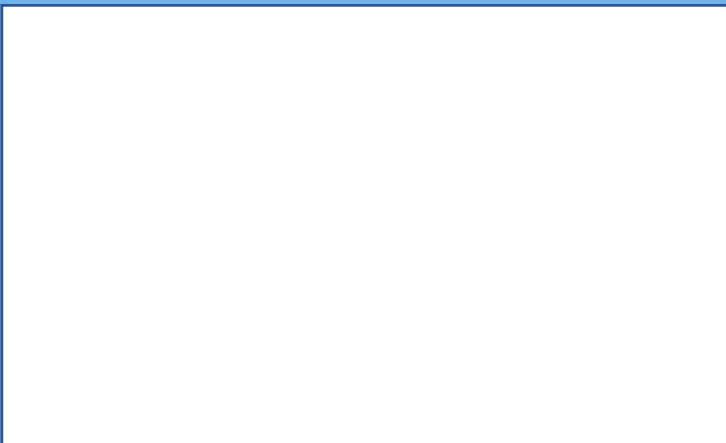
Over 26 years of experience within the audio visual furniture industry and with a reputation for being friendly and reliable to deal with, we treat every project with the same level of importance.

Our furniture is manufactured at our York facility which you are welcome to visit and see your project in the build process or just to have a look around.

You will be able to see the high level of investment in technology and the deep passion we have for what we do.

Quadra AV Furniture Ltd
Head Office : Glaisdale Road,
Northminster Business Park,
Upper Poppleton, York, YO26 6QT

Web - www.qavf.co.uk
Telephone - 01904 528 519
Email - enquiries@qavf.co.uk



Quadra Concepts UK Limited trading as Quadra AV Furniture is registered in England and Wales.
Reg No. 06322818 – VAT No. GB 916 3405 38

