

Collaborate



Control



Communicate



Converse

AV lecterns, cabinets, media walls, video walls, collaboration tables, huddle spaces, boardroom and meeting room tables, control desks, server racks, screen stands / trolleys and sound management solutions to name a few



Quadra manufactures a multitude of lecterns, with every conceivable shape, style and material.

From traditional to contemporary lecterns for lecture theatres, meeting rooms or houses of worship.

If you can't see the design you want, we will design and subject to your approval, manufacture it just for you.

We specialise in bespoke designs!



Academy

The Academy is a full skeleton framework in 13U or 16U, within the frame there are 19" rack mount holes. The Academy have removable side panels, locking front and rear door. Worktops as standard are 865mm long, 1200mm long or 1500mm or we can make any size you require. These also come height adjustable in the lectern, teacher desk or workstation configuration.



Academy Eco

The Academy Eco lectern / credenza is a versatile design, Quadra can work this design into a lectern, teacher desk, workstation or even a tall projector cabinet, these can also be height adjustable. The Academy Eco comes with removable side panels and opening front and rear doors! This lectern gives you full access to the open frame rack inside. Or alternatively you can have a pull out 360 rack on a drawer.



Academy Eco lecterns

teacher desks & workstations

Description: Academy Eco 16U single lectern.

A wooden cabinet with alloy corner posts. Internal options are rack strip to the front of the cabinet, Quadra open frame rack or adjustable shelves. Standard 25mm worktop widths available are 865mm – 1200mm – 1500mm. 2x 80mm cable grommet holes. Cut outs to side panels for ventilation and removable for full 360 access. Lockable removable rear door. Corner posts are in either white or silver powder coat finish. Door is on fully adjustable hinges, complete with lock and D handle. Carpet castors. Cable access in through the base.

Large range of melamine and veneer finishes available.

Optional extras include 10U or 12U open frame rack, vinyl branding, control panel housings and monitor arms (please see peripherals section for information and pricing)



Product Code:

ACADECO-(mm)-MEL (melamine top)

ACADECO-(mm)-VEN (veneer top)

ACADECO-(mm)-RAL (RAL Paint)

Approximate size (mm)

850 x 865/1200/1500 x 730 (HxWxD)

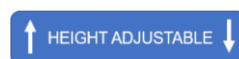
Description: Academy Eco height adjustable lectern.

Cabinet can accommodate a Quadra open frame rack, rack strip or adjustable shelves.

Worktop heights from 835mm to approx.1250mm. Standard 25mm worktop widths available are 865mm – 1200mm. Ventilation grills to removable side panels for full 360 access. Corner posts are in either white or silver powder coat finish. Door is on fully adjustable hinges, complete with lock and D handle. Carpet castors 2x locking.

Large range of melamine and veneer finishes available.

Optional extras include 10U or 12U open frame rack, vinyl branding, control panel housings, monitor arms or a perspex panel can be fitted in the door facing the audience with branding and back lit (please see peripherals section for information and pricing)



Product Code:

ACADECO-12UH/ADJ-MEL (melamine top)

ACADECO-12UH/ADJ-VEN (veneer top)

Approximate size (mm)

796-1195 x 865/1200 x 750 (HxWxD)

Description: Academy Eco 360 single Lectern.

A wooden cabinet with alloy corner posts. Internally will be space for a pull out and turn OFR that sits on an equipment rack drawer, this is on easy run glides with quick release catch for drawer removal. 360 degree turntable. Standard 25mm worktop widths available are 865mm – 1200mm – 1500mm. 2x 80mm cable grommet holes. Cut outs to side panels for ventilation and removable for full 360 access. Lockable rear door. Corner posts are in either white or silver powder coat finish. Door is on fully adjustable hinges, complete with lock and D handle. Carpet castors.

Large range of melamine and veneer finishes available.

Optional extras include vinyl branding, control panel housings and monitor arms (please see peripherals section for information and pricing)



Product Code:

ACADECO-360-MEL (melamine top)

ACADECO-360-VEN (veneer top)

Approximate size (mm)

980 x 920 x 730 (HxWxD)

Description: Academy Eco 16U single lectern with pull out keyboard drawer.

A wooden cabinet with alloy corner posts. Internal options are rack strip to the front of the cabinet, Quadra open frame rack or adjustable shelves. Standard 25mm worktop widths available are 865mm – 1200mm – 1500mm. 2x 80mm cable grommet holes. Cut outs to side panels for ventilation and removable for full 360 access. Locking removable rear panel. Corner posts are in either white or silver powder coat finish. Door is on fully adjustable hinges, complete with lock and D handle. Carpet castors. Cable access in through the base.

Large range of melamine and veneer finishes available.

Optional extras include 10U, 12U or 16U open frame rack, vinyl branding, control panel housings and monitor arms (please see peripherals section for information and pricing)



Product Code:

ACADECO-K(mm)-MEL (melamine top)

ACADECO-K(mm)-VEN (veneer top)

Approximate size (mm)

975 x 865/1200/1500 x 730 (HxWxD)



Academy Eco lecterns

teacher desks & workstations

Description: Academy Eco 16U double lectern / cabinet

A wooden cabinet with alloy corner posts. Internal options are rack strip to the front of the cabinet, Quadra open frame rack, adjustable shelves or a combination. Standard 25mm worktop width is 1334mm. 2x 80mm cable grommet holes. Ventilation grills to removable side panels for full 360 access. Lockable doors. Corner posts are in either white or silver powder coat finish. Doors are on fully adjustable hinges, complete with lock and D handle. Carpet Castors. Cable access in through the base.

Large range of melamine and veneer finishes available.

Optional extras include 10U, 12U or 16U open frame rack, vinyl branding, control panel housings and monitor arms (please see peripherals section for information and pricing)



Product Code:

ACADECO-DOU-MEL (melamine top)

ACADECO-DOU-VEN (veneer top)

Approximate size (mm)

850 x 1334 x 645 (HxWxD)

Description: Academy Eco teacher desk - The rack can be on the RHS or the LHS as used.

Base cabinet can accommodate a Quadra open frame rack, rack strip or adjustable shelves. 2x 80mm cable grommet holes. Ventilation grills to removable side panel. Corner posts are in either white or silver powder coat finish. Door is on fully adjustable hinges, complete with lock and D handle. Carpet castors 2x locking.

Large range of melamine and veneer finishes available.

Codes are for the 12U rack version. We can alter the design to accept the NEW Quadra pull out equipment rack drawer, this will mean a slight design change and you will need to add the price of the drawer which you can find in the peripherals section



Product Code:

ACADECO-12U-TD-LHS-M (cabinet on left)

ACADECO-12U-TD-RHS-M (cabinet on right)

ACADECO-12U-TD-LHS-V (cabinet on left)

ACADECO-12U-TD-LHS-V (cabinet on right)

Approximate size (mm)

850 x 2000 x 750 (HxWxD)

Description: Academy Eco height adjustable teacher desk

The rack can be on the RHS or the LHS as used, base cabinet can accommodate a Quadra open frame rack, rack strip or adjustable shelves. Worktop heights from 835mm to approx. 1250mm. 2x 80mm cable grommet holes. Ventilation grills to removable side panel. Corner posts are in either white or silver powder coat finish. Door is on fully adjustable hinges, complete with lock and D handle. Carpet castors 2x locking.

Large range of melamine and veneer finishes available.

Optional extras includes open frame racks, vinyl branding, CPH's



Product Code:

ACADECO-HADJTD-LHS-M (cabinet on left)

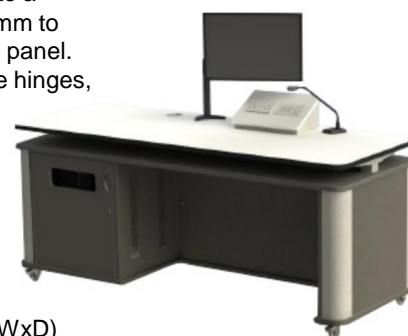
ACADECO-HADJTD-RHS-M (cabinet on right)

ACADECO-HADJTD-LHS-V (cabinet on left)

ACADECO-HADJTD-LHS-V (cabinet on right)

Approximate size (mm)

795-1195 x 2000 x 750 (HxWxD)

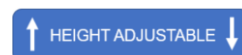


Description: Academy Eco height adjustable workstation

There are 2 cabinets one either end. The cabinets can accommodate a Quadra open frame rack, rack strip or adjustable shelves. Worktop heights from 835mm to approx. 1250mm. 2x 80mm cable grommet holes. Ventilation grills to removable side panel. Corner posts are in either white or silver powder coat finish. Doors are on fully adjustable hinges, complete with lock and D handle. Carpet castors 2x locking.

Large range of melamine and veneer finishes available.

Optional extras includes open frame racks, vinyl branding, CPH's



Product Code:

ACADECO-12UH/ADJWS-M

ACADECO-12UH/ADJWS-V

Approximate size (mm)

795-1195 x 2600 x 750 (HxWxD)





Academy lecterns

teacher desks & workstations

Description: Academy 16U single lectern

Steel frame chassis. Built in rack mounts. Option for shelf lining with adjustable shelves. Wooden panels, door and worktop. Standard 25mm worktop widths available 865mm, 1200mm and 1500mm. 2x 80mm cable grommets (grommet holes can also be a single dryline box cut out) Integral ventilation all round the top of the cabinet just below the worktop. Locking door with soft close mechanism. Cable access to the base. Carpet castors.

Large range of melamine and veneer finishes available.

Optional extras include shelf lining with adjustable shelves, vinyl branding, control panel housings and monitor arms (please see peripherals section for information and pricing) Also can come 13U high. (750mm high)



Product Code:

ACAD16USIN-(mm)-MEL (melamine)

ACAD16USIN-(mm)-VEN (veneer)

Approximate size (mm)

880 x 865/1200/1500 x 730 (HxWxD)

Description: Academy 16U double lectern

Steel frame chassis. Built in rack mounts. Option for shelf lining with adjustable shelves. Wooden panels, door and worktop. Standard 25mm worktop width 1520mm. 2x 80mm cable access grommets (grommet holes can also be a single dryline box cut out) Integral ventilation all round the top of the cabinet just below the worktop. Locking doors with soft close mechanism. Cable access to the base. Carpet castors.

Large range of melamine and veneer finishes available.

Optional extras include shelf lining with adjustable shelves, vinyl branding, control panel housings and monitor arms (please see peripherals section for information and pricing) Also can come 13U high. (750mm high)



Product Code:

ACAD16UDOU01-MEL (melamine)

ACAD16UDOU01-VEN (veneer)

Approximate size (mm)

880 x 1520 x 730 (HxWxD)

Description: Academy 16U single teacher desk with footwell

Steel frame chassis. Built in rack mounts. Option for shelf lining with adjustable shelves. Wooden panels, door and worktop. Standard 25mm worktop width 1745mm. 2x 80mm cable access grommets (grommet holes can also be a single dryline box cut out). Integral ventilation all round the top of the cabinet just below the worktop. Locking door with soft close mechanism. Cable access to the base. Carpet castors.

Large range of melamine and veneer finishes available.

Optional extras include shelf lining with adjustable shelves, vinyl branding, control panel housings and monitor arms (please see peripherals section for information and pricing) Also can come 13U high. (750mm high)



Product Code:

ACAD16UTD-LHS-M (melamine - cabinet on left)

ACAD16UTD-RHS-M (melamine - cabinet on right)

ACAD16UTD-LHS-V (veneer - cabinet on left)

ACAD16UTD-LHS-V (veneer - cabinet on right)

Approximate size (mm)

880 x 1745 x 730 (HxWxD)

Description: 16U Academy workstation 2.4 long

2x Academy 16U single cabinets with leg space in the centre.

Standard 25mm worktop length is 2400mm. 2x 80mm cable access grommets (grommet holes can also be a single dryline box cut out). Integral ventilation all round the top of the cabinet just below the worktop. Locking door with soft close mechanism. Cable access to the base. Carpet castors.

Large range of melamine and veneer finishes available.

Optional extras include shelf lining with adjustable shelves, vinyl branding, control panel housings and monitor arms (please see peripherals section for information and pricing) Also can come 13U high. (750mm high)



Product Code:

ACAD16U24DSK-M (melamine)

ACAD16U24DSK-V (veneer)

Approximate size (mm)

880 x 2400 x 730 (HxWxD)



Academy lecterns teacher desks & workstations

Description: 13U Height adjustable Academy single lectern

Electrically operated height adjustable Academy 13U single lectern
Steel frame chassis. Built in rack mounts. Option for shelf lining with adjustable shelves. Wooden panels, door and worktop. Standard 25mm worktop widths available 865mm & 1200mm (Max width). 2x 80mm cable access grommets (grommet holes can also be a single dryline box cut out). Integral ventilation all round the top of the cabinet just below the worktop. Locking door with soft close mechanism. Cable access to the base. Carpet castors.

Large range of melamine and veneer finishes available.

Optional extras include shelf lining with adjustable shelves, vinyl branding, control panel housings and monitor arms (please see peripherals section for information and pricing)

Product Code:

ACAD13UH/ADJ-(mm)-MEL (melamine)

ACAD13UH/ADJ-(mm)-VEN (veneer)

Approximate size (mm)

800/1200 x 865/1200/ x 730 (HxWxD)



Description: 16U Academy 3m workstation with height adjustable central top

2x Academy 16U Single cabinets with leg space in the centre.

Steel frame chassis. Built in rack mounts. Option for shelf lining with adjustable shelves. Wooden panels, door and worktop. Available in a 16U rack version. Standard 25mm worktop length is 3000mm with a 1400mm long electrically height adjustable worktop. 2x 80mm cable access grommets (grommet holes can also be a single dryline box cut out.) Integral ventilation all round the top of the cabinet just below the worktop. Locking doors with soft close mechanism. Cable access to the base. Carpet castors.

Large range of melamine and veneer finishes available.

Optional extras include shelf lining with adjustable shelves, vinyl branding, control panel housings and monitor arms (please see peripherals section for information and pricing)

Also can come 13U high. (750mm high)

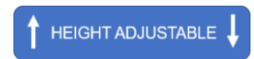
Product Code:

ACAD16UH/ADJ-M (melamine)

ACAD16UH/ADJ-V (veneer)

Approximate size (mm) 880 x 3000 x 730 +

Height adjustable worktop height 965/1200 (HxWxD)



Description: 16U Academy single lectern / cabinet with keyboard drawer

Academy 16U single Lectern with a pull out keyboard drawer.

Steel frame chassis. Built in rack mounts. Option for shelf lining with adjustable shelves. Wooden panels, door and worktop. Available in a 13U rack version. Standard 25mm worktop widths available 865mm, 1200mm and 1500mm. 2x 80mm cable access grommets (grommet holes can also be a single dryline box cut out.) Integral ventilation all round the top of the cabinet just below the worktop. Locking front and rear doors with soft close mechanisms. Cable access to the base. Carpet castors.

Large range of melamine and veneer finishes available.

Optional extras include shelf lining with adjustable shelves, vinyl branding, control panel housings and monitor arms (please see peripherals section for information and pricing)

Also can come 13U high. (875mm high)

Product Code:

ACAD16USIN-K(mm)-MEL (melamine)

ACAD16USIN-K(mm)-VEN (veneer)

Approximate size (mm)

1005 x 865/1200/1500 x 730 (HxWxD)



Description: 16U Academy angled lectern

Academy twin 16U single cabinets set at an angle to each other.

Steel frame chassis. Built in rack mounts. Option for shelf lining with adjustable shelves. Wooden panels, doors and worktop. Available in a 13U rack version. Standard 25mm overall worktop width 1820mm. 2x 80mm cable access grommets (grommet holes can also be a single dryline box cut out.) Integral ventilation all round the top of the cabinet just below the worktop. Locking front and rear doors with soft close mechanisms.. Cable access to the base. Carpet castors.

Also can come 13U high. (875mm high)

Product Code:

ACAD16UDOU02-MEL (melamine)

ACAD16UDOU02-VEN (veneer)

Approximate size (mm)

880 x 1820 x 730 (HxWxD)





Description: 16U Academy Eco Piqo for small screens

A wooden Eco cabinet with alloy corner posts. Piqo frame for a 32" to 55" screen. Internal options are rack strip, Quadra open frame rack or adjustable shelves. 80mm cable hole. Screen column bolted to the worktop. Vent grills in the rear removable panel or side panels. Locking doors with soft close mechanisms. Cable access in the base. Carpet castors.

Piqo monitor bracket.

Quadra standard 32" to 55" trolley top, Black/Silver, 35kg maximum weight limit (includes one screen mount)

Optional extras include 10U,12U or 16U open frame rack vinyl branding and a Quadra camera shelf

Product Code:

ACADECOSIN-PIQO32-M (melamine)

ACADECOSIN-PIQO32-V (veneer)

Approximate size (mm)

2050 x 865 x 730 (HxWxD)



Description: 16U Academy Eco Piqo for large screens

A wooden Eco cabinet with alloy corner posts. Piqo frame for a 55" to 85" screen. Internal options are rack strip, Quadra open frame rack or adjustable shelves. 80mm cable hole. Screen column bolted to the worktop. Vent grills in the rear removable panel or side panels. Locking doors with soft close mechanisms. Cable access in the base. Carpet castors.

Piqo monitor bracket.

Quadra standard 55" to 85" trolley top, Black/Silver 100kg maximum weight limit (includes one screen mount)

Optional extras include 10U,12U or 16U open frame rack vinyl branding and a Quadra camera shelf

Product Code:

ACADECOSIN-PIQO55-M (melamine)

ACADECOSIN-PIQO55-V (veneer)

Approximate size (mm)

2050 x 865 x 730 (HxWxD)



Description: 16U double Academy Eco Piqo for small screens

A wooden Eco cabinet with alloy corner posts. Piqo frame for a 32" to 55" screen. Internal options are rack strip, Quadra open frame rack or adjustable shelves. 2x 80mm cable holes. Screen column bolted to the worktop. Vent grills in the rear removable panel or side panels. Locking doors with soft close mechanisms. Cable access in the base. Carpet castors.

Piqo monitor bracket.

Quadra standard 32" to 55" trolley top, Black/Silver, 35kg maximum weight limit (includes one screen mount)

Optional extras include 10U,12U or 16U open frame rack vinyl branding and a Quadra camera shelf

Product Code:

ACADECODOU-PIQO32-M (melamine)

ACADECODOU-PIQO32-V (veneer)

Approximate size (mm)

2050 x 1334 x 730 (HxWxD)



Description: 16u double Academy Eco Piqo for large screens

A wooden Eco cabinet with alloy corner posts. Piqo frame for a 55" to 85" screen. Internal options are rack strip, Quadra open frame rack or adjustable shelves. 2x 80mm cable holes. Screen column bolted to the worktop. Vent grills in the rear removable panel or side panels. Locking doors with soft close mechanisms. Cable access in the base. Carpet castors.

Piqo monitor bracket.

Quadra standard 55" to 85" trolley top, Black/Silver, 35kg maximum weight limit (includes one screen mount)

Optional extras include 10U,12U or 16U open frame rack vinyl branding and a Quadra camera shelf

Product Code:

ACADECODOU-PIQO55-M (melamine)

ACADECODOU-PIQO55-V (veneer)

Approximate size (mm)

2050 x 1334 x 730 (HxWxD)





Description: 16U Academy Piqo for small screens

Academy cabinet with rack mount. Piqo frame for a 32" to 55" screen.
Screen column bolted to the worktop. Integral ventilation all around the top of the cabinet just below the worktop. Locking doors with soft close mechanisms. Cable access in the base. Carpet castors.

Large range of melamine and veneer finishes available.

Piqo monitor bracket.

Quadra standard 32" to 55" trolley top, Black/Silver, 35kg maximum weight limit (includes one screen mount)

Optional extras include shelf lining with adjustable shelves, vinyl branding and a Quadra camera shelf

Product Code:

ACAD16USIN-PIQO32-M (melamine)

ACAD16USIN-PIQO32-V (veneer)

Approximate size (mm)

1790 x 865 x 730 (HxWxD)



Description: 16U Academy Piqo for large screens

Academy cabinet with rack mount. Piqo frame for a 55" to 85" screen.
Screen column bolted to the worktop. Integral ventilation all around the top of the cabinet just below the worktop. Locking doors with soft close mechanisms. Cable access in the base. Carpet castors.

Large range of melamine and veneer finishes available.

Piqo monitor bracket.

Quadra standard 55" to 85" trolley top, Black/Silver, 100kg maximum weight limit (includes one screen mount)

Optional extras include shelf lining with adjustable shelves, vinyl branding and a Quadra camera shelf

Product Code:

ACAD16USIN-PIQO55-M (melamine)

ACAD16USIN-PIQO55-V (veneer)

Approximate size (mm)

1790 x 865 x 730 (HxWxD)



Description: 16U double Academy Piqo for small screens

Academy double cabinet with rack mount. Piqo frame for a 32" to 55" screen.
Screen column bolted to the worktop. Integral ventilation all around the top of the cabinet just below the worktop. Locking doors with soft close mechanisms. Cable access in the base. Carpet castors.

Large range of melamine and veneer finishes available.

Piqo monitor bracket.

Quadra standard 32" to 55" trolley top, Black/Silver, 35kg maximum weight limit (includes one screen mount)

Optional extras include shelf lining with adjustable shelves, vinyl branding and a Quadra camera shelf

Product Code:

ACAD16UDOU-PIQO32-M (melamine)

ACAD16UDOU-PIQO32-V (veneer)

Approximate size (mm)

1790 x 1520 x 730 (HxWxD)



Description: 16U double Academy Piqo for large screens

Academy double cabinet with rack mount. Piqo frame for a 55" to 85" screen.
Screen column bolted to the worktop. Integral ventilation all around the top of the cabinet just below the worktop. Locking doors with soft close mechanisms. Cable access in the base. Carpet castors.

Large range of melamine and veneer finishes available.

Piqo monitor bracket.

Quadra standard 55" to 85" trolley top, Black/Silver, 100kg maximum weight limit (includes one screen mount)

Optional extras include shelf lining with adjustable shelves, vinyl branding and a Quadra camera shelf

Product Code:

ACAD16UDOU-PIQO55-M (melamine)

ACAD16UDOU-PIQO55-V (veneer)

Approximate size (mm)

1790 x 1520 x 730 (HxWxD)





Description: Small wooden control panel housing

Small control panel housing manufactured out of a melamine or veneer faced MDF. 50mm cable grommet hole in the base for cables to drop into a cabinet and it also can have a 50mm cable grommet to the rear but we would need to know where the cables will run when ordering. Designed for a double gang controller or AV connection plate, Quadra will cut the holes but the controller / plate is to be supplied and installed by the AV integrator. With this being made out of MDF we can customise the size of this unit to any size controller or any other items. (With this would then be bespoke order and would need to be designed and quoted)



Product Code:

CPH-250-MEL (melamine)
CPH-250-VEN (veneer)

Approximate size (mm)
132 x 250 x 137 (HxWxD)

Description: Academy control panel housing large

Academy control panel housing 395mm long
Steel framework which has 2x captive nuts for bolting through a desktop, or you can secure the unit to the desk top via wood screws. The frame has an earth bonding nut and thread to the rear. 50mm cable grommet knock outs to either end. Cut out available width is 325mm (We can cut anything you require into these FOC, we would need to be free issued the item to make sure it fits)
Standard silver powder coat steel frame with a melamine or veneer top to match the lectern or cabinet.



Product Code:

CPHLARGE
CPHLARGETOP (top only)

Approximate size (mm)
170 x 395 x 240 (HxWxD)

Description: Academy control panel housing long

Academy control panel housing 595mm long
Steel framework which has 2x captive nuts for bolting through a desktop, or you can secure the unit to the desk top via wood screws. The frame has an Earth bonding nut and thread to the rear. 50mm cable grommet knock outs to either end. Cut out available width is 525mm (We can cut anything you require into these FOC, we would need to be free issued the item to make sure it fits)
Standard silver powder coat steel frame with a melamine or veneer top to match the lectern or cabinet.



Product Code:

CPHLONG
CPHLONGTOP (top only)

Approximate size (mm)
170 x 595 x 240 (HxWxD)

Description: Academy full panel set

Academy full panel set which includes front door, rear door, 2x side panels and a worktop, 865 - 1200 & 1500mm long, includes clips, locks, hinges and handle.
(No steel frame)



Product Code:

ACADPANELSET-MEL
ACADPANELSET-VEN

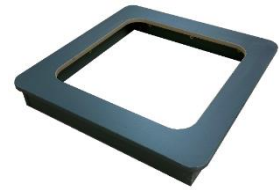


Description: Academy 100mm plinth

Academy wooden plinth to raise the Academy off its wheels by 100mm

Product Code:

ACADPLINTH-MEL
ACADPLINTH-VEN



Description: Academy replacement front door

Academy replacement door complete with handles and hinges
(Please state 13u or 16u and as you look at the door closed which side the hinges are)

Product Code:

ACADDOOR-MEL
ACADDOOR-VEN



Description: Academy teacher desk leg & beam (steel only)

Academy teacher desk steel leg and extendable beam only.....
powder coated silver

Product Code:

ACADLEG





Description: Standard Melamine



Maple 0375



Windsor Oak 1929



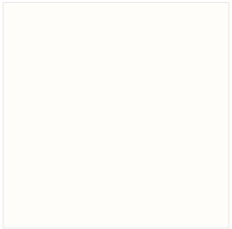
Bavaria Beech 0381



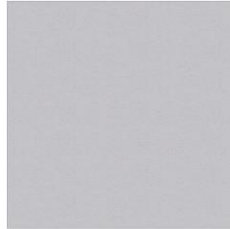
Aida Walnut H3704



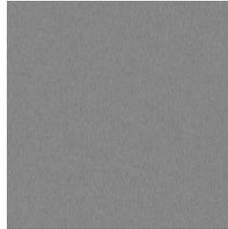
Verona Cherry H1615



White K101



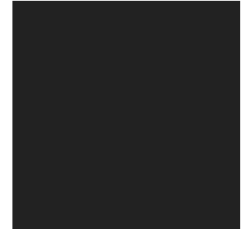
Stone Grey 0112



Dust Grey U732

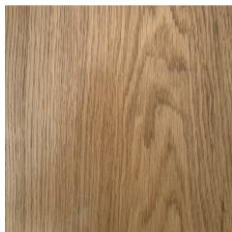


Graphite Grey 0162



Black 0190

Description: Real Wood Veneer



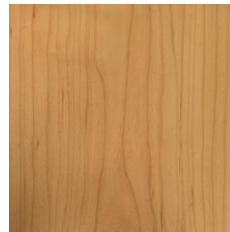
European Oak



American White Oak



Crown Cut Ash



Crown Maple



Crown American Walnut

Quadra AV Furniture source the highest quality hardwoods and real wood veneers. The varying grain and figure of these woods genuinely emphasise the natural beauty and individuality of the material. No two pieces of timber are identical and there will be natural variations in the grain, knots and colouring. This arises from natural minerals in the wood.



If you have a specific finish in mind please contact us with details and we will source samples for you.

We work with all the main manufacturers including Kronospan, Egger and Formica.

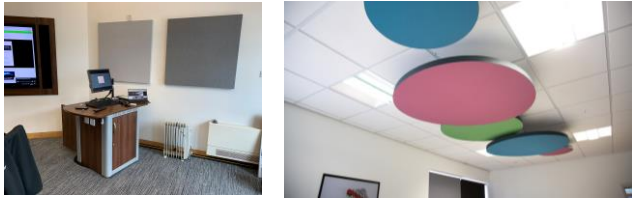
We also work with specialist veneer companies who have a vast array of stock from exotic, bold, warm, fresh and modern veneers.

Decorative laminate is a mainstay of commercial interior design and Quadra can offer the latest designs and textures as well as classic best sellers.



Comprehensive range available

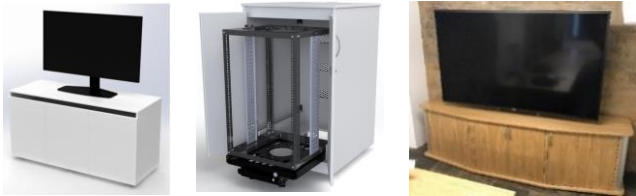
Book 1 - Acoustics



Book 2 & 3 - Lecterns



Book 4 – Cabinets & Credenzas



Book 5 – Tables & Desks



Book 6 – Control room & Enquiry Room



Book 7 – Media Walls & Screen Surrounds



Book 8 – Collaboration Tables & Towers



Book 9 – Media & Signage Towers



Book 10 – Piqo Trolleys & Stands



Book 11 – Kaigi Booth's & Media Walls



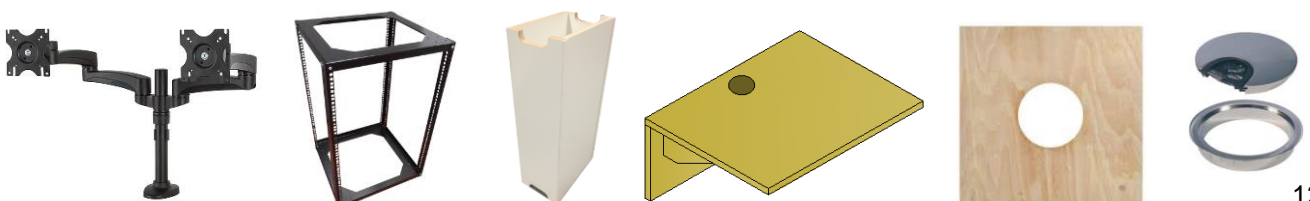
Book 12 – Connectivity



Book 13 – Task & Meeting Chairs



Book 14 - Peripherals





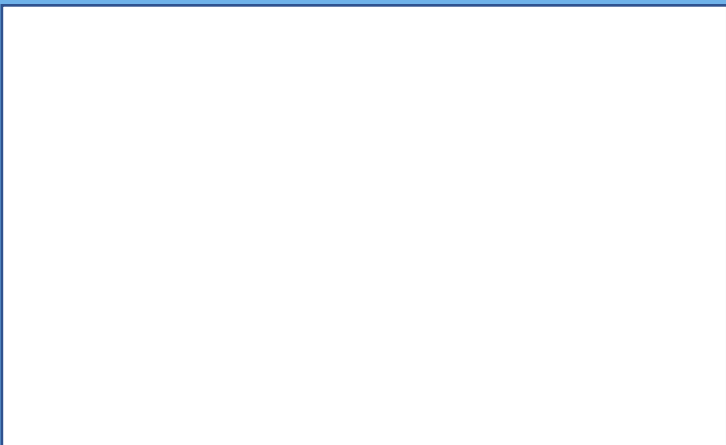
Over 26 years of experience within the audio visual furniture industry and with a reputation for being friendly and reliable to deal with, we treat every project with the same level of importance.

Our furniture is manufactured at our York facility which you are welcome to visit and see your project in the build process or just to have a look around.

You will be able to see the high level of investment in technology and the deep passion we have for what we do.

Quadra AV Furniture Ltd
Head Office : Glaisdale Road,
Northminster Business Park,
Upper Poppleton, York, YO26 6QT

Web - www.qavf.co.uk
Telephone - 01904 528 519
Email - enquiries@qavf.co.uk



Quadra Concepts UK Limited trading as Quadra AV Furniture is registered in England and Wales.
Reg No. 06322818 – VAT No. GB 916 3405 38

