

Collaborate



Control



Communicate



Converse

AV lecterns, cabinets, media walls, video walls, collaboration tables, huddle spaces, boardroom and meeting room tables, control desks, server racks, screen stands / trolleys and sound management solutions to name a few



## Description: IcabCool Electric Cabinet Fan

Cabinet cooler, 20cfm.

Cabinet cooler removes heat generated by components located in smaller cabinets, credenzas, lecterns and entertainment centres. Thermostatically controlled to operate only when needed to extend fan life and minimise dust, this quiet-cooling device features an aesthetically designed vent that can be painted to match its environment.

### Product Code:

ICAB-COOL



## Description: B-Tech premium single screen desk mount

Designed for screens up to 24" (61cm) / 9kg (20lbs)

Integrated cable management. Fits screens with VESA mounting patterns: 75 x 75 and 100 x 100. Maximum extension: 285mm. Easy tilt adjustment +/- 40 Degree. Easy height adjustment using tool-less locking ring. Desk clamp and grommet fixings included.

### Product Code:

BT7372



## Description: B-Tech premium double screen desk mount

Designed for 2 screens up to 24" (61cm) / 9kg (20lbs)

Integrated cable management. Fits screens with VESA mounting patterns: 75 x 75 and 100 x 100. Maximum extension: 457mm. Easy tilt adjustment +/- 40 Degree. Easy height adjustment using tool-less locking ring. Desk clamp and grommet fixings included.

### Product Code:

BT7374



## Description: B-Tech full motion screen desk mount

Designed for screens up to 24" (61cm) / 9kg (20lbs)

Integrated cable management. Fits screens with VESA mounting patterns: 75 x 75 and 100 x 100. Features 3 swivel points: 360 degree pole, 360 degree at pivot and 180 degree at interface. Maximum extension: 390mm. Easy tilt adjustment +/- 40 Degree. Easy height adjustment using tool-less locking ring. Desk clamp and grommet fixings included.

### Product Code:

BT7382



## Description: B-Tech full motion double arm screen desk mount

Designed for screens up to 24" (61cm) / 9kg (20lbs)

Integrated cable management. Fits screens with VESA mounting patterns: 75 x 75 and 100 x 100. Features 3 swivel points: 360 degree pole, 360 degree at pivot and 180 degree at interface. Maximum extension: 560mm. Easy tilt adjustment +/- 40 Degree. Easy height adjustment using tool-less locking ring. Desk clamp and grommet fixings included.

### Product Code:

BT7383



## Description: B-Tech full motion double screen desk mount

Designed for screens up to 24" (61cm) / 9kg (20lbs)

Integrated cable management. Fits screens with VESA mounting patterns: 75 x 75 and 100 x 100. Features 3 swivel points: 360 degree pole, 360 degree at pivot and 180 degree at interface. Maximum extension: 560mm. Easy tilt adjustment +/- 40 Degree. Easy height adjustment using tool-less locking ring. Desk clamp and grommet fixings included.

### Product Code:

BT7384





## Description: M desk mount spring single silver

Multibrackets M Desk mount Spring Single - Mounting kit for LCD display - silver - screen size: 15" - 27" - table mount

Arms easily adjust to support an ergonomically correct working position, extend or retract monitor arm; rotate monitor to landscape or portrait mode. Gas spring hovering system lets you gracefully adjust your monitors height and position. High-grade aluminium arm features a stylish anti-scratch surface, arm rotating horizontally 180 degrees in each direction (total 360 degrees). Built in cable management system. VESA 75/100 fits most 15"-27" monitors. The durable hardware supports clamp or grommet installation. Supports monitors weighing from 1kg up to 9kg (7350073733255)

### Product Code:

QCMBS-SIL



## Description: M desk mount spring single black

M Desk mount Spring Single - Mounting kit for LCD display - table mount - black - screen size: 15" - 27" - max 9kg - VESA 75x75 to 100x100 mm

Arms easily adjust to support an ergonomically correct working position, extend or retract monitor arm; rotate monitor to landscape or portrait mode. Gas spring hovering system lets you gracefully adjust your monitors height and position. High-grade aluminium arm features a stylish anti-scratch surface, arm rotating horizontally 180 degrees in each direction (total 360 degrees). Built in cable management system. VESA 75/100 fits most 15"-27" monitors. The durable hardware supports clamp or grommet installation. Supports monitors weighing from 1kg up to 9kg (7350073733262)

### Product Code:

QCMBS-BLK



## Description: M desk mount spring dual silver

M Desk mount Spring Single - Mounting kit for LCD display - table mount - black - screen size: 15" - 27" - max 9kg - VESA 75x75 to 100x100 mm

The Dual arms easily adjust to support an ergonomically correct working position, extend or retract monitor arm; rotate monitor to landscape or portrait mode. Gas spring hovering system lets you gracefully adjust your monitors height and position. High-grade aluminium arm features a stylish anti-scratch surface, arm rotating horizontally 180 degrees in each direction (total 360 degrees). Built in cable management system. VESA 75/100 fits most 15"-27" monitors. The durable hardware supports clamp or grommet installation. Supports monitors weighing from 1kg up to 9kg (7350073733279)

### Product Code:

QCMBD-SIL



## Description: M desk mount spring dual black

M Desk mount Spring Single - Mounting kit for LCD display - table mount - black - screen size: 15" - 27" - max 9kg - VESA 75x75 to 100x100 mm

The Dual arms easily adjust to support an ergonomically correct working position, extend or retract monitor arm; rotate monitor to landscape or portrait mode. Gas spring hovering system lets you gracefully adjust your monitors height and position. High-grade aluminium arm features a stylish anti-scratch surface, arm rotating horizontally 180 degrees in each direction (total 360 degrees). Built in cable management system. VESA 75/100 fits most 15"-27" monitors. The durable hardware supports clamp or grommet installation. Supports monitors weighing from 1kg up to 9kg (7350073733279)

### Product Code:

QCMBD-BLK





## Description: Quadra open frame equipment rack - Flat packed

The lightweight and robust open frame 19" rack  
Designed for 19" standard rack plates. Steel frame work powder coated black. Earth bonding studs in the base. Comes flat packed in a box with all fittings.  
Racks can be bolted together to make one tall rack. 4x holes in all 4 corners for carpet castors or fixing a rack onto another rack.  
Includes 2x cable steel trays.  
Standard fitment for cage nuts and bolts (not supplied)

### Specifications

Q10UOFR - (wxhxd) 495mm x 510mm x 485mm (frame weight 7.25kg)

Q12UOFR - (wxhxd) 495mm x 598mm x 485mm (frame weight 7.5kg)

Q16UOFR - (wxhxd) 495mm x 775mm x 485mm (frame weight 8.25kg)

- **These equipment racks are available for next day dispatch**

### Product Code:

10UORF

12UOFR

16UOFR



## Description: Quadra pull out open frame rack drawer 360

The Quadra equipment rack drawer is on easy run glides which have a quick release catch for easy removal with a 360 degree turn table with lock.  
The drawer also benefits from a 360 degree turn table which is lockable via a cabinet key, this design feature enables access to the back of the equipment for service.  
This enables the integrator easy access to the equipment within the lectern or cabinet.  
The benefits of using this drawer are serviceability or hot swap in case of equipment break down and installation. Finished in black powder coat.

If you would like to be able to utilise one of our Quadra open frame equipment racks above, we can design any of our wooden lecterns to accommodate this pull out equipment drawer. Our design team will be pleased to work up a 3D visual and quote.

### Product Code:

QCREVOLVETRAY



## Description: Open frame rack sleeve

These wood sleeves allow the above open frame racks to be clad in a standard melamine or veneer. The sleeve has a base, top and 2 sides. We can make the sleeve deeper to allow a back and a door if required.

If this is of interest please enquire on a design and price.

Image shows a Quadra 16u open frame rack. Rack is supplied separate (see above)

### Product Code:

10UOFRBOX-MEL

10UOFRBOX-VEN

12UOFRBOX-MEL

12UOFRBOX-VEN

16UOFRBOX-MEL

16UOFRBOX-VEN



## Description: Under desk cable tower

The tower is manufactured out of 18mm mdf and all 4 sides clip together which means it is easier for install. To the top and bottom on the 200mm wide end panels are cable access holes 100mm x 30mm.

Finished in standard melamine, if you require a special finish please let us know and we will quote accordingly.

### Product Code:

TOWER2





## Description: Wall mounted fixed glass VC shelf

This is a toughened glass semi circular shelf  
There are 2x wall mounting brackets to fit to the wall.

**Product Code:**  
GLASS-SHELF

Approximate size (mm)  
400 x 200 (WxD)



## Description: Folding laptop shelf

Folding laptop shelf for your lectern or cabinet.  
These can be in a standard melamine or veneer to match the lectern / cabinet. Under the folding laptop shelf we can cut into the side of the lectern or cabinet holes for either single gang or double gang cut outs for dry line backing boxes (backing boxes, plates etc to be fitted and supplied by the AV integrator)  
We manufacture a wall mounted folding laptop shelf which has a wooden back plate.

**Product Code:**  
LTS01-MEL  
LTS01-VEN  
WM-LTS01-MEL (wall mounted)  
WM-LTS01-VEN (wall mounted)

Approximate size (mm)  
18 x 440 x 555 (ThxWxD)

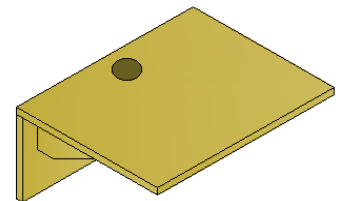


## Description: Wall mounted fixed VC shelf

Fixed shelf for your video conference camera.  
These can be in a standard melamine or veneer to match any lectern / cabinet Quadra supplied.  
This is a standard item but we can manufacture different sizes bespoke to you.

**Product Code:**  
VCSHELF-MEL  
VCSHELF-VEN

Approximate size (mm)  
250 x 550 x 350 (HxWxD)



## Description: Danby replacement front door

Danby replacement door comes without handle, lock and hinges.

**Product Code:**  
DANBY-DOOR-MEL  
DANBY-DOOR-VEN



## Description: Swainby replacement top only

Swainby replacement top only.

**Product Code:**  
SWAINBY-W/TOP-MEL  
SWAINBY-W/TOP-VEN



## Description: Speaker pattress

Plywood or MDF speaker pattress.  
These are 595 x 595 to fit on top of a suspended ceiling tile. We will cut a hole into the centre of the pattress so you can fit your ceiling speaker into the soft tile without damage to the back of the tile. Cut-out size will need to be confirmed at point of order.

**Product Code:**  
SPKPATT

Approximate size (mm)  
6 x 595 x 595 (HxWxD)

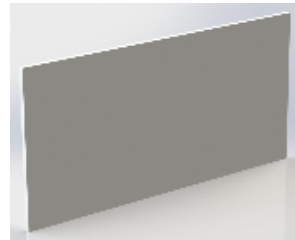




## Description: Wall pattress

MDF melamine wall pattress.

These wall pattresses are for when you are mounting a screen or projector onto a plaster board wall. These will span the wall and you will be able to fix into the uprights within the wall and spread the weight over a larger surface area. Please confirm the finish when ordering. If you require an alternative size not listed below please let us know and we will supply you a quote. These pattresses are made from 18mm MDF and finished in a standard melamine with ABS/PVC edging all around.



## Product Code:

- 400x400x18PAN-MEL
- 600x300x18PAN-MEL
- 1650x1250x18PAN-MEL
- 1800x1200x18PAN-MEL

## Description: Cable grommets – nickel

Desk cable tidies keep computer, telephone and other cables tidy around the work space. Slim grommet with brush insert. Matt Nickel plated. 80mm diameter.



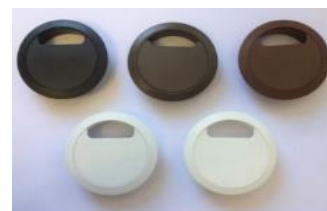
## Product Code:

80MMGROM-NP

## Description: Cable grommets - plastic

Desk cable tidies keep computer, telephone and other cables tidy around the work space. Plastic ABS.

Black, Dark Brown, Light Brown. Light Grey, White.  
80mm diameter.



## Product Code:

- 50MMGROM-BLK (black)
- 80MMGROM-BLK (black)
- 80MMGROM-WH (white)
- 80MMGROM-L/GREY (light grey)
- 80MMGROM-L/BROWN (light brown)
- 80MMGROM-D/BROWN (dark brown)

## Description: Carpet castors

Carpet castors which are 85mm tall, these are swivel castors for ease of manoeuvring. We can supply 4x non-locking or we can supply you 2x non-locking and 2x locking.



## Product Code:

- 491013 (4x non locking)
- 491013/491019 (4x but 2x locking)

## Description: Packing crate

If you are shipping equipment abroad or even within the UK, Quadra can manufacture a wooden packing crate to your requirements.

This can be collected this from Quadra or we can arrange for it to be delivered to you at cost, please asked for details.



## Product Code:

CRATE

## Description: Routing

We offer a custom routing service for inseting AV connection ports into existing furniture.



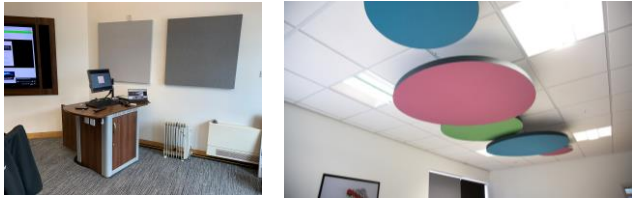
## Product Code:

ROUTING



# Comprehensive range available

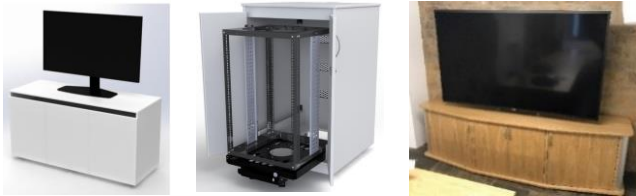
Book 1 - Acoustics



Book 2 & 3 - Lecterns



Book 4 – Cabinets & Credenzas



Book 5 – Tables & Desks



Book 6 – Control room & Enquiry Room



Book 7 – Media Walls & Screen Surrounds



Book 8 – Collaboration Tables & Towers



Book 9 – Media & Signage Towers



Book 10 – Piqo Trolleys & Stands



Book 11 – Kaigi Booth's & Media Walls



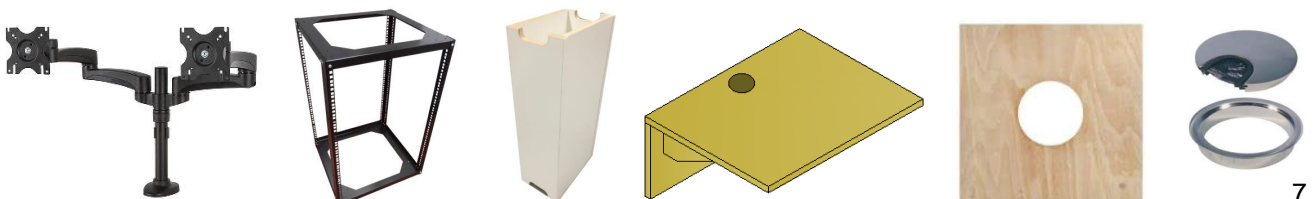
Book 12 – Connectivity



Book 13 – Task & Meeting Chairs



Book 14 - Peripherals





Over 25 years of experience within the Audio Visual furniture industry and with a reputation for being friendly and reliable to deal with, we treat every project with the same level of importance.

All of our furniture is manufactured at our York factory which you are welcome to see your project in the build process or just to have a look around. You will see the level of investment and the passion for what we do.

Quadra AV Furniture Ltd  
Head Office : Glaisdale Road,  
Northminster Business Park,  
Upper Poppleton, York, YO26 6QT

[www.qavf.co.uk](http://www.qavf.co.uk)  
01904 528 519  
[sales@qavf.co.uk](mailto:sales@qavf.co.uk)



Quadra Concepts UK Limited trading as Quadra AV Furniture is registered in England and Wales.  
Reg No.06322818 – VAT No. GB 916 3405 38