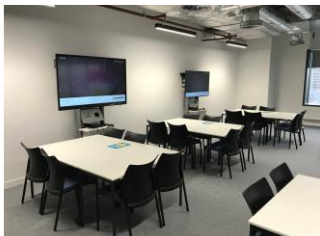


Kaigi 会議



www.Kaigi.space



Collaborate



Control



Communicate



Converse

AV lecterns, cabinets, media walls, video walls, collaboration tables, huddle spaces, boardroom and meeting room tables, control desks, server racks, screen stands / trolleys and sound management solutions to name a few



The Kaigi range has been designed as a response to the current demand for huddle spaces and offers an unparalleled level of quality, value and craftsmanship, brought together into one simple, beautiful offering.

Kaigi Huddle space furniture can be specified as a high back booth, for occupancies ranging from two to six, as a high back sofa, in single, double and triple seat units and as a range of workstations.

As the Kaigi range is a panel-based system, featuring a patent pending, tool free, quick release mounting system; it can also be assembled into numerous configurations, to define areas in open plan spaces.

The addition of power modules and monitor screen mounting options give Kaigi the ability to be customised to exact requirements.



Standard features:

Tool free panel connection system with a steel and aluminium structural frame. 12mm foam backed fabric cladding to panels, levelling feet, round steel or tapered oak legs as standard.

Options

Mono or two-tone upholstery.
Button details to sofas backs.
Integral desktop support brackets and leg.

Media panel screen support bracket for media panels only. Quadra can also design and manufacture a bespoke wooden media panel to inset the screen.

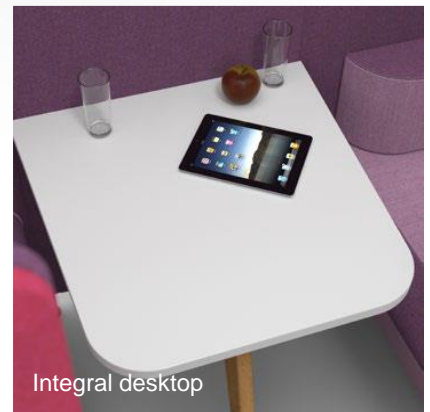
Integral power module to sofa plinth panels. Quadra can supply power modules that fit into an 80mm diameter apertures upon request / order.



Two tone panel upholstery



Two tone sofa upholstery and button



Integral desktop



Media panel and screen bracket



Tapered Oak leg



Rounded Steel leg



Product Code:
KAIGI-2PB

Description: 2 seat booth

High back, 2 person booth with integrated sofas. Shown with an integrated desktop, supported on oak legs.

Dimensions: 2100(w) x 1100(d) x 1440(h)

Options:

- Mono-tone or Two-tone fabric
- Integrated desktop
- Oak or Black Steel feet and legs
- Media Panels and Bracket

Fabrics from the image:

Panels Fabric 1
Camira Synergy Lateral LDS28

Panels Fabric 2
Camira Synergy Chain LDS19

Sofa Main Fabric
Camira Synergy Chain LDS19

Sofa Accent Fabric
Camira Synergy Chain LDS19





Product Code:

KAIGI-4PB

Description: 4 seat booth

High back, 4 person booth with integrated sofas. Shown with an integrated desktop, supported on round steel legs.

Dimensions: 2100(w) x 1600(d) x 1440(h)

Options:

- Mono-tone or Two-tone fabric
- Integrated desktop
- Oak or Black Steel feet and legs
- Media Panels and Bracket

Fabrics from the image:

Panels Fabric 1
Camira Synergy Partner LDS16

Panels Fabric 2
Camira Synergy Hook LDS29

Sofa Main Fabric
Camira Synergy Partner LDS16

Sofa Accent Fabric
Camira Synergy Mix LDS17





Product Code:

KAIGI-6PB

Description: 6 seat booth

High back, 6 person booth with integrated sofas. Shown with an integrated desktop, supported on oak legs.

Dimensions: 2100(w) x 2200(d) x 1440(h)

Options:

- Mono-tone or Two-tone fabric
- Integrated desktop
- Oak or Black Steel feet and legs
- Media Panels and Bracket

Fabrics from the image:

Panels Fabric 1
Camira Synergy Similar LDS81

Panels Fabric 2
Camira Synergy Similar LDS81

Sofa Main Fabric
Camira Synergy Serendipity LDS08

Sofa Accent Fabric
Camira Synergy Serendipity LDS08





1 person sofa



Product Code:
KAIGI-1PS

Description: 1 person sofa

High back, 1 person sofa shown supported on round steel legs with integrated power module.

Dimensions: 1100(w) x 700(d) x 1440(h)

Options:

- Mono-tone or Two-tone fabric
- Oak or Black Steel feet

Fabrics from the image:

Panels Fabric 1
Kvadrat Hallingdal 0173



Panels Fabric 2
Kvadrat Hallingdal 0100



Sofa Main Fabric
Kvadrat Hallingdal 0457



Sofa Accent Fabric
Kvadrat Hallingdal 0457





2 person sofa



Product Code:
KAIGI-2PS

Description: 2 person sofa

High back, 2 person sofa shown with buttons, supported on round steel legs.

Dimensions: 1600(w) x 700(d) x 1440(h)

Options:

- Mono-tone or Two-tone fabric
- Oak or Black Steel feet

Fabrics from the image:

Panels Fabric 1
Camira Synergy Venture LDS66



Panels Fabric 2
Camira Synergy Fellowship LDS66



Sofa Main Fabric
Camira Synergy Venture LDS05



Sofa Accent Fabric
Camira Synergy Banbridge CUZ32





3 person sofa



Product Code:
KAIGI-3PS

Description: 3 person sofa

High back, 3 person sofa, supported on oak legs, with integrated power modules.

Dimensions: 2200(w) x 700(d) x 1440(h)

Options:

- Mono-tone or Two-tone fabric
- Oak or Black Steel feet

Fabrics from the image:

Panels Fabric 1
Camira Blazer Edinburgh CUZ1Y

Panels Fabric 2
Camira Blazer Vassar CUV2U

Sofa Main Fabric
Camira Blazer Vassar CUV2U

Sofa Accent Fabric
Camira Blazer Vassar CUV2U





1 person workstation



Product Code:
KAIGI-1PWS

Description: 1 person work space

High back, 1 person workstation with integrated desktop, shown supported on round steel legs.

Dimensions: 1100(w) x 1800(d) x 1440(h)

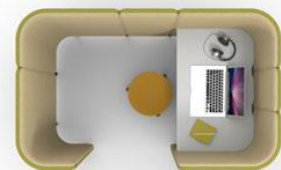
Options:

- Mono-tone or Two-tone fabric
- Oak or Black Steel feet

Fabrics from the image:

Panels Fabric 1
Camira Blazer Penola CUZ2X

Panels Fabric 2
Camira Blazer Dartmouth CUV2Q





2 person workstation



Product Code:
KAIGI-2PWS

Description: 2 person workstation

High back, 2 person workstation with two integrated desktops, shown supported on oak legs.

Dimensions: 2140(w) x 1400(d) x 1440(h)

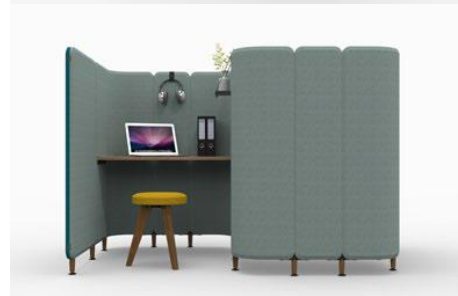
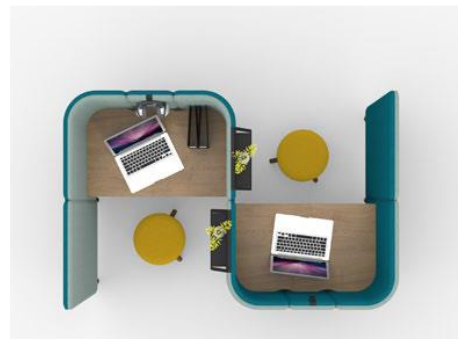
Options:

- Mono-tone or Two-tone fabric
- Oak or Black Steel feet

Fabrics from the image:

Panels Fabric 1
Camira Blazer Lite Balance LTH41

Panels Fabric 2
Camira Blazer Lite Pillow LTH43





3 person workstation



Product Code:
KAIGI-3PWS

Description: 3 person workstation

High back, 3 person workstation with three integrated desktops, shown supported on oak legs.

Dimensions: 3180(w) x 1400(d) x 1440(h)

Options:

- Mono-tone or Two-tone fabric
- Oak or Black Steel feet

Fabrics from the image:

Panels Fabric 1
Camira Blazer St Andrews CUZ86

Panels Fabric 2
Camira Blazer Stanford CUZ2R

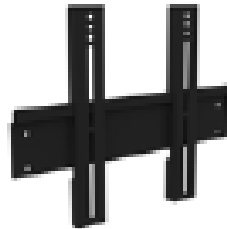




會議
Kaigi



Media Panel Screen Bracket



Supports screens up to 32"
(Requires Media Panel option)

Feet and leg options

Oak

Black steel



Desktop AV



EVOline® Circle 80 with UK Mains & USB Charge

1 x UK socket, individually fused 3.15A, with 3m supply cable & 13A UK plug.

1 x Double USB Type A charger (2.1A shared).
Available in White or Black.

Pre Installed into table with choice of placement on desktop and multiple units if required.



This is a selection of the fabric finish options available.

Kaigi 会議

Camira Blazer Lite which is our standard option is only available in the colours below and not available for sofas. Please check to confirm finishes are available.



Fabric finish options

Below is a selection of our premier fabric finish options.

Camira Aspect



Camira Patina



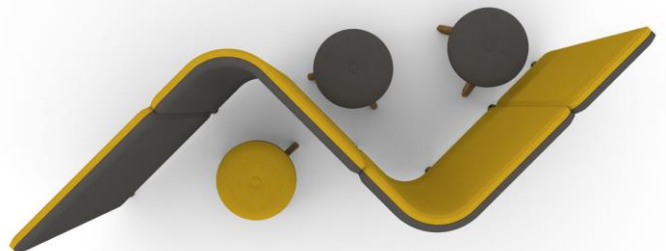


Coming soon





Coming soon

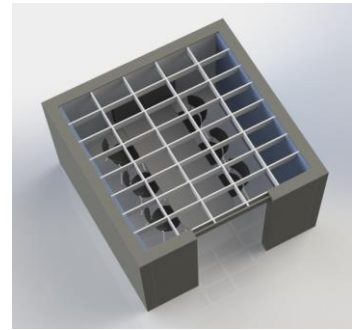
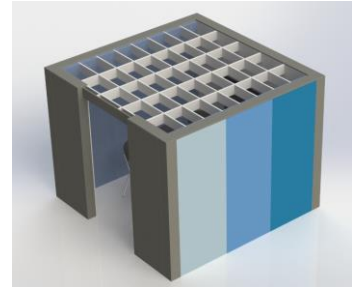




Quadra Qube meeting booth

Bespoke Qube Huddle booths

Our custom Qube booths can be designed and built to exact requirements. Comprising multiple sectional panels they can cater for fixed soft seat benches or standard movable chairs.

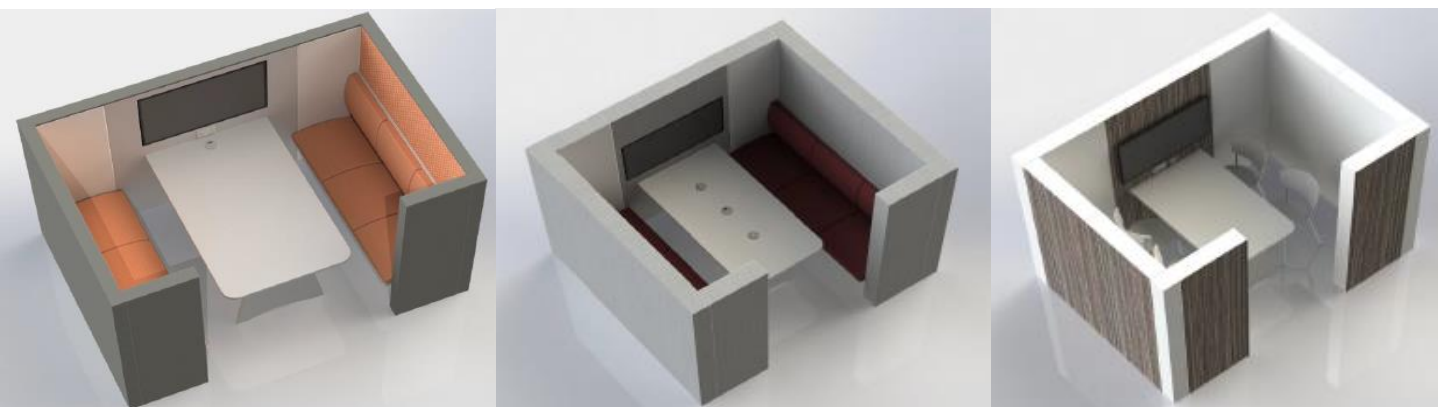


Designed to easily incorporate any AV requirements, the Qube has built in cable routing and access throughout, allowing for AV equipment to be placed anywhere within the booth. This provides a clean working environment with no unsightly cables.

A unique feature of the booth is that they can cater for chairs instead of fixed benches, giving each user the ability to position them selves for a more comfortable user experience.

Using the Acoustica range of sound proofing solutions to two internal walls stops any reverberation and enhances the vocal quality of meetings especially with video conferencing.

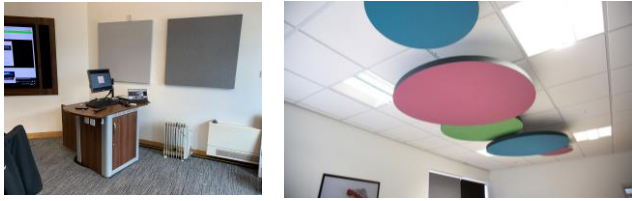
As a design feature we can also add a lattice top which further decreases noise. (as shown above)





Comprehensive range available

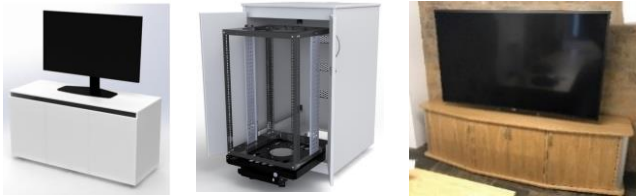
Book 1 - Acoustics



Book 2 & 3 - Lecterns



Book 4 – Cabinets & Credenzas



Book 5 – Tables & Desks



Book 6 – Control room & Enquiry Room



Book 7 – Media Walls & Screen Surrounds



Book 8 – Collaboration Tables & Towers



Book 9 – Media & Signage Towers



Book 10 – Piqo Trolleys & Stands



Book 11 – Kaigi Booth's & Media Walls



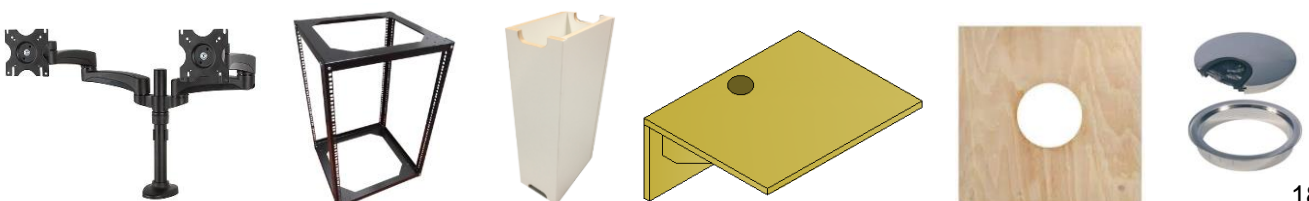
Book 12 – Connectivity



Book 13 – Task & Meeting Chairs



Book 14 - Peripherals





Description: Standard Melamine



Maple 0375



Windsor Oak 1929



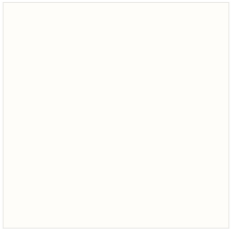
Bavaria Beech 0381



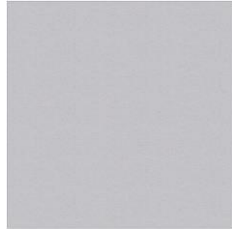
Aida Walnut H3704



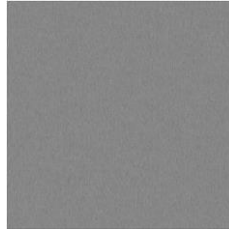
Verona Cherry H1615



White K101



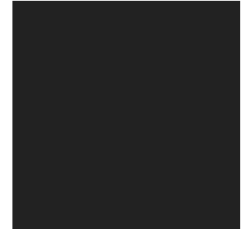
Stone Grey 0112



Dust Grey U732

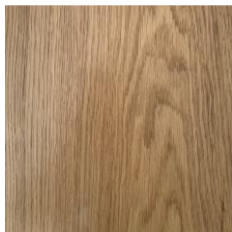


Graphite Grey 0162



Black 0190

Description: Real Wood Veneer



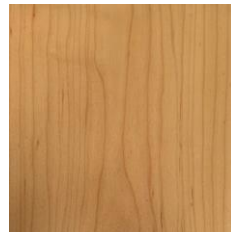
European Oak



American White Oak



Crown Cut Ash



Crown Maple



Crown American Walnut

Quadra AV Furniture source the highest quality hardwoods and real wood veneers. The varying grain and figure of these woods genuinely emphasise the natural beauty and individuality of the material. No two pieces of timber are identical and there will be natural variations in the grain, knots and colouring. This arises from natural minerals in the wood.



If you have a specific finish in mind please contact us with details and we will source samples for you.

We work with all the main manufacturers including Kronospan, Egger and Formica.

We also work with specialist veneer companies who have a vast array of stock from exotic, bold, warm, fresh and modern veneers.

Decorative laminate is a mainstay of commercial interior design and Quadra can offer the latest designs and textures as well as classic best sellers.



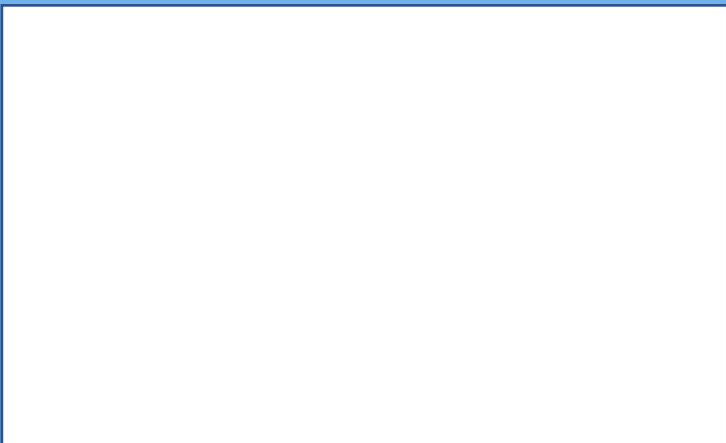
Over 26 years of experience within the audio visual furniture industry and with a reputation for being friendly and reliable to deal with, we treat every project with the same level of importance.

Our furniture is manufactured at our York facility which you are welcome to visit and see your project in the build process or just to have a look around.

You will be able to see the high level of investment in technology and the deep passion we have for what we do.

Quadra AV Furniture Ltd
Head Office : Glaisdale Road,
Northminster Business Park,
Upper Poppleton, York, YO26 6QT

Web - www.qavf.co.uk
Telephone - 01904 528 519
Email - enquiries@qavf.co.uk



Quadra Concepts UK Limited trading as Quadra AV Furniture is registered in England and Wales.
Reg No. 06322818 – VAT No. GB 916 3405 38

