

Collaborate



Control



Communicate



Converse

AV lecterns, cabinets, media walls, video walls, collaboration tables, huddle spaces, boardroom and meeting room tables, control desks, server racks, screen stands / trolleys and sound management solutions to name a few



Piqo trolleys, stands & brackets



University of the West of Scotland

Our Piqo range of trolleys, stands and brackets are manufactured in the UK in alloy & mild steel with a powder coat finish.

The range centres around standard portable trolleys, fixed stands and screen brackets all built around a robust and adaptable metal frame system that includes integral cable management.

The range offers many add on modules and accessories allowing the units to be fully customised to suit the exact requirements.

Quadra can enhance the range with the addition of bespoke cabinets designed around the AV equipment requirements. We are also able to offer custom metal work designs for larger projects which include items such as room booking housings for tables right through to lecterns and podiums



Small trolley & stand

Description: Pigo small screen trolley

Trolley for 32" to 55" screens & displays.

1.6m max screen height (centre of screen mount). 35kg maximum weight limit .Satin grey over satin black powder coat. Screen can be mounted landscape or portrait. Universal up to 400mm x 800mm portrait. Universal up to 800mm x 400mm landscape. VESA 75/100/200/300/400/600x400/800x400. Base design allows nesting of one or more trolleys to save space. Screen can tilt 11 degree downwards, 5 degree upwards (screen size dependent). Screen is adjustable to any height on the trolley. Option tether points on rear of stand. Simple and quick assembly. High grade steel and aluminium parts. Depth & height allows passage through a standard single door.

Product Code:

QC3255TR (up to 35kg in weight **In stock**)

Approximate size (mm)

1650 x 761 x 591 (HxWxD)



Description: Pigo small screen floor to wall

Stand for 32" to 55" screens & displays.

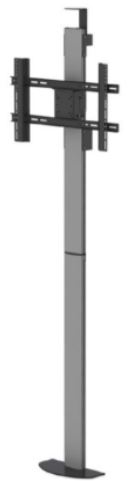
1.8m max screen height (centre of screen mount). 35kg maximum weight limit. Satin grey over satin black powder coat. Screen can be mounted landscape or portrait. Universal up to 400mm x 800mm portrait. Universal up to 800mm x 400mm landscape. VESA 75/100/200/300/400/600x400/800x400. Column plate for fixing back to the wall (can be set at a height to suit). Base plate has fixing points into the floor with cover. Screen can tilt 11 degree downwards, 5 degree upwards (screen size dependent). Screen adjustable to any height on the stand.

Product Code:

QC3255FC (up to 35kg in weight **In stock**)

Approximate size (mm)

1827 x 720 x 175 (HxWxD)



Description: Pigo large shelf for 3255 stands & trollies

Equipment shelf.

Steel equipment shelf will fit onto the QC3255TR and QC3255FC trolleys and stands. The shelf is large enough for standard sized AV equipment such as DVD / Blu-Ray players, set top boxes, laptops and AV receivers. Adjustable height on the QC3255TR trolley. Can be fitted to QC5585TR (Side mounted only). Can be installed below or above the screen.

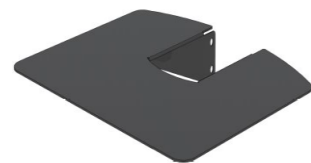
Product Code:

QC3255TRSH1`



Approximate size (mm)

450 x 320 (WxD)



Description: Pigo large shelf for 3255 stands & trollies

Camera shelf.

Steel camera shelf will fit onto the QC3255TR and QC3255FC trolleys and stands. The shelf is large enough for standard sized VC Cameras. Centre slot allows cameras to be bolted to shelf. Adjustable height on the QC3255TR trolley. Can be fitted to QC5585TR (Side mounted only). Can be installed below or above the screen. Max weight loading 5kg

Product Code:

QC3255TRSH2



Approximate size (mm)

250 x 195 (WxD)





Large trolley & stand

Description: Piqo large screen trolley

Trolley for 50" to 90" screens & displays.

1.95m max screen height (centre of screen mount). 100kg maximum weight limit. Satin grey over satin black powder coat. Screen can be mounted landscape or portrait. Universal up to 600mm x 600mm portrait. Universal up to 800mm x 600mm landscape. VESA 200/300/400/600x400/600/800x400. 50" - 90" flat screens in Landscape (800x600) - 55" - 90" flat screens in Portrait (600x800). Tilts downwards up to 16 degree (screen size dependent). Screen adjustable to any height on the trolley. Large base for increased stability. Depth & height allows passage through a standard single door. Twin extruded aluminium uprights for simple assembly & adjustment. Cable management through base and up through uprights. 80mm castors (2x locking) and glide feet both included.



Product Code:

QC5585TR (up to 100kg in weight **In stock**)

QC8599XLTR (up to 135kg in weight **To order**)

Approximate size (mm)
1920 x 1085 x 645 (HxWxD)

Description: Piqo large screen floor to wall

Stand for 50" to 90" screens & displays.

1.8m max screen height (centre of screen mount). 100kg maximum weight limit. Satin grey over satin black powder coat. Screen can be mounted landscape or portrait. Universal up to 600mm x 600mm portrait. Universal up to 800mm x 600mm landscape. VESA 200/300/400/600x400/600/800x400. 50" - 90" flat screens in Landscape (800x600) - 55" - 90" flat screens in Portrait (600x800). Tilts downwards up to 16 degree (screen size dependent). Screen adjustable to any height on the stand. Large back rail for increased fixing and stability. Base plate has fixing points into the floor with cover. Twin extruded aluminium uprights for simple assembly & adjustment. Cable management through base and up through uprights.



Product Code:

QC5585FC (up to 100kg in weight **In stock**)

QC8599XLFC (up to 135kg in weight **To order**)

Approximate size (mm)
1827 x 842 x 300 (HxWxD)

Description: Piqo large shelf for 5585 stands & trollies

Equipment shelf.

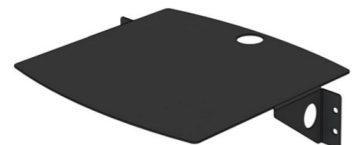
Steel Equipment shelf large enough for standard sized AV equipment such as DVD / Blu-Ray players, set top boxes, laptops and AV receivers. Adjustable height on the QC5585TR trolley. Can be installed below or above the screen. Multiple shelves can be added to the trolley. Max weight loading 8kg.

Product Code:

QC5585TRSH1



Approximate size (mm)
450 x 320 (WxD)





Electric height adjustable stand & trolley

Description: Pigo large TV electric height adjustable floor to wall stand

Screen sizes 46" up to 86". **NEW for 2021**

Electric height adjustable (Comes flat packed)

VESA 200/300/400/600x400/600/800x400/800x600.

760mm Min screen centre height.

1400mm max screen centre height.

100kg maximum screen weight limit.

Satin black powder coat.

Fixed distance wall mounts, can be fixed at any height.

Base plate has fixing points for into the floor with cover.

Features anti crush technology.

Cable management through base and up through uprights.

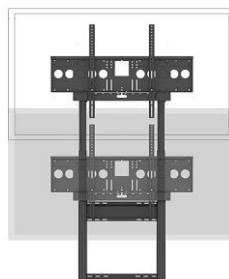
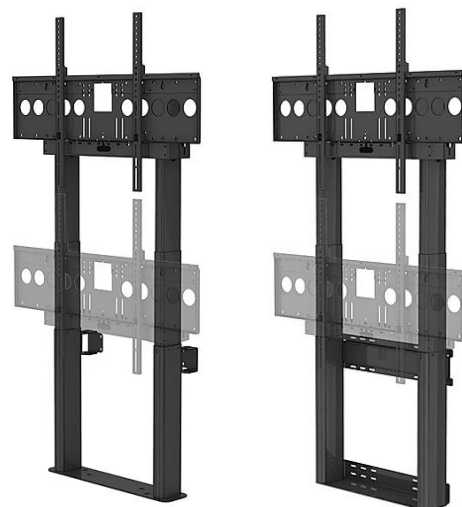
Bracket arms are bolted to back frame for safety.

Tabs for padlocks, if increased security is required.

Simple and quick assembly.

High grade steel and aluminium parts.

Manufactured in the UK.



Product Code:

QC4686FC-H/ADJ



Description: Pigo large TV electric height adjustable trolley

Screen sizes 46" up to 86".

Electric height adjustable. (Comes flat packed)

VESA 200/300/400/600x400/600/800x400/800x600.

Universal fixing points up to 875mm x 600mm

900mm Min screen centre height.

1540mm max screen centre height.

100kg maximum screen weight limit.

Rigid, stable steel base.

Option for castors or feet.

Accessible 4x locking castors, supplied.

4x adjustable feet, supplied.

Satin Silver & Black powder coat.

Fixed distance wall mounts, can be fixed at any height.

Base plate has fixing points for into the floor with cover.

Features anti crush technology.

Cable management through base and up through uprights.

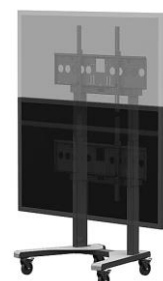
Bracket arms are bolted to back frame for safety.

Tabs for padlocks, if increased security is required.

Simple and quick assembly.

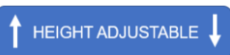
High grade steel and aluminium parts.

Manufactured in the UK.



Product Code:

QC4686TR-H/ADJ





Dual screen brackets for the Piqo units

Description: Piqo large dual side by side screen kit

Screen sizes 2x 42" up to 2x 70" can use the QC5585TR & FC.

Screen sizes from 50" to 70" will have to be fitted to the QC8599XLFC floor to wall only

Horizontal beam is 1814mm wide end to end. VESA 75/100/200/300/400/600x400/ 800x400. Screens can be mounted in landscape or portrait. Universal fixing points up to 800mm x 400mm landscape. Universal fixing points up to 400mm x 800mm portrait. 1750mm maximum screen height (centre of screen fixing points). Screens can independently tilt 12 deg downwards and 5 deg upwards.

Stand not included

Product Code:
QC5585TRDS1

Approximate size (mm)
1800 (L)



Description: Piqo large dual side by side screen kit

Screen sizes 2x 26" up to 2x 46" can use the QC5585TR & FC.

Suitable for 2x 26" up to 2x 46" screens in landscape and 2x 47" up to 2x 55" screens in Portrait

Horizontal beam is 1214mm wide end to end. VESA 75/100/200/300/400/600x400/ 800x400. Screens can be mounted in landscape or portrait. Universal fixing points up to 800mm x 400mm landscape. Universal fixing points up to 400mm x 800mm portrait. 1750mm maximum screen height (centre of screen fixing points). Screens can independently tilt 12 deg downwards and 5 deg upwards.

Stand not included

Product Code:
QC5585TRDS2

Approximate size (mm)
1200 (L)



Quadra's alternative screen stand to the Piqo range



For Alliance screen towers see Book 8 Quadra Collaboration Tables and Towers

Tower 1 will take a 49" – 55"

Tower 2 will take 65" – 75"

Tower 3 will take dual 49" – 55"

Removable rear shields to help installation and connectivity. It also gives extra security and dresses the screen and bracket if stood in front of a window.

The bigger and greater the weight of the screens will mean fixing to the floor and to the wall behind.

Stand not included



Piqo stand optional extras

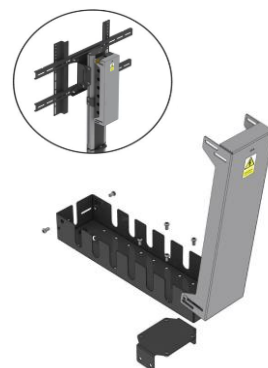
Description: Piqo cable management box

Will fit the 3255 & 5585 trolleys & stands.

Can be adjusted to any height on the column. 6 entry / exit points for cables on each side. Lockable housing via a small pad lock (not included). Can be placed on the base of stands or trolleys to tidy all plugs away. Allows all plugs for AV equipment to be hidden in one place, leaving single power cable for connection to mains supply. 1 entry / exit point for mains cable on each end. Internal clamp to retain multi-plugs in position.

Product Code:
QC3255TRCMB

Approximate size (mm)
396 x 100 x 63-88 (LxWxD)



Description: Piqo steel cabinet

Will fit the extruded uprights on the 3255 & 5585 trolleys & stands.

Upright passes through rear and makes up rear of cabinet. Can be adjusted to any height on upright. 4x 55mm knock-outs in rear to pass standard sized UK mains plug through. Latch can be locked with a padlock (not included). Cabinet is reversible, door can open to either side. Designed to fit front of QC3255TR but can also fit the rear. Aesthetics and colour to match QC3255TR and similar.

Door opening 400mm wide x 400mm height.

Cabinet can be attached to the following frames - QC5585TR & QC5585FC via bracket.

Product Code:
QC3255CAB

Approximate size (mm)
404 x 500 x 202 (HxWxD)



Description: Piqo control panel housing

Steel back plate to fit on the Piqo extruded aluminium uprights which will then have a standard control panel housing.

These Piqo CPH's will fit to either the QC5585TR or QC5585FC. Cut outs to the wooden top will be done as part of the cost and not extra, we would need the free issue of the plate / controller to make sure it fits. Cuttable width is 325mm on the worktop. Finished in durable satin silver control panel frame with a wooden top (finish tbc) and black powder coat back plate.

Product Code:
QC5585-CPH

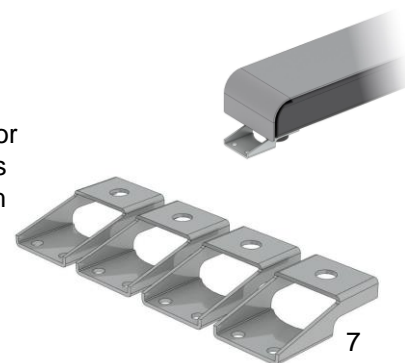


Description: Piqo floor fixing bracket

Set of 4 zinc plated brackets.

Set of 4 zinc plated brackets to securely fix QC3255TR & QC5585TR to the floor. Installs between the base unit and includes adjustable feet for trolley. No fixings included as all floor constructions are different. 2x fixing holes which are 6.5mm diameter. Simple and quick assembly. Finished in durable zinc plate.

Product Code:
QC3255TRBKT





Piqo stand optional extras cont.

Description: Piqo extra alloy 600mm extrusions

Extrusion to extend the QC3255TR / FC's & QC5585TR / FC's by 600mm.

Sold per length.

- 1 length needed for the QC3255TR & FC's
 - 2 lengths needed for the QC5585TR & FC's
- includes fixings.

Product Code:
EX0017B

Approximate size (mm)
600 x 50 x 120 (LxWxD)



Description: Piqo extra alloy 1200mm extrusions

Extrusion to extend the QC3255TR / FC's & QC5585TR / FC's by 1200mm.

Sold per length.

- 1 length needed for the QC3255TR & FC's
 - 2 lengths needed for the QC5585TR & FC's
- includes fixings.

Product Code:
EX0017A

Approximate size (mm)
1200 x 50 x 120 (LxWxD)



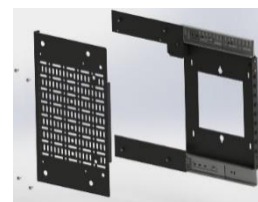
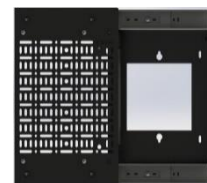
Description: Piqo sliding wall mount

Wall mounted sliding rack frame.

Removable equipment panel, 250mm of lateral movement and a push to release catch meaning the unit is locked in place. Can be mounted left or right handed, can also be hung so it can be dropped down.

This unit is to fit behind the screen, wall mounted or via a bracket to our Piqo QC3255FC & QC5585FC floor to wall stands.

Product Code:
QCEQPTRAY





Piqo packages & cabinets

Description: Piqo floor to wall with cabinet and CPH

Utilising the Piqo 5585FC floor to wall. Piqo floor to wall 2.1m high with cabinet at base and CPH with PC attached. Cabinet to be 400mm deep with 3x adjustable shelves, lockable modesty panel and cable access behind shelves. CPH to include cut-outs with a usable width of 325mm.

(Screens, controllers, power and small form PC not included, furniture only)

Product Code:

QC5585FC-B

Approximate size (mm)

2119 x 832 x 480 (HxWxD)



Description: Piqo trolley with cabinet and CPH

Utilising the Piqo 5585FC floor to wall. Piqo floor to wall 2.1m high with cabinet at base and control panel housing with PC attached. Cabinet to be 400mm deep with 3x adjustable shelves, lockable modesty panel and cable access behind shelves. CPH to include cut-outs with a usable width of 325mm.

(Screens, controllers, power and small form PC not included, furniture only)

Product Code:

QC5585TR-A

Approximate size (mm)

1920 x 1085 x 645 (HxWxD)



Description: Piqo floor to wall with equipment shelf and CPH

Utilising the Piqo 5585FC floor to wall. Piqo floor to wall 2.1m with equipment shelf and control panel housing with PC attached. CPH to include cut-outs with a usable width of 325mm.

(Screens, controllers, power and small form PC not included, furniture only)

Product Code:

QC5585FC-D

Approximate size (mm)

2119 x 832 x 390 (HxWxD)



Description: Piqo floor to wall with rack cabinet and CPH

Utilising the Piqo 5585FC floor to wall and a Swainby rack cabinet. Piqo floor to wall 2.1m high with a 12U rack cabinet at base and CPH with PC attached. The cabinet is based on a Swainby rack cabinet, this will accept a Quadra open frame rack, adjustable shelves or rack strip. The cabinet is lockable and has vent grills to either side. CPH to include cut-outs with a usable width of 325mm.

Optional extras include 10U or 12U open frame rack.(please see peripherals section for information and pricing)

This unit can also be manufactured using the Academy Eco cabinets.

(Screens, controllers, power and small form PC not included, furniture only)

Product Code:

QC5585FC-F

Approximate size (mm)

1907 x 832 x 640 (HxWxD)





Piqo ceiling and desk top stands

Description: Piqo ceiling bracket for 18" – 39" displays Max weight loading 35kg.

1 metre drop TV ceiling mount (cuttable), 1 metre additional pole available - QCPM1MEXT see bottom of [page 71](#), VESA 50, 75, 100, 200, 300, 400x300 200-1100mm drop, Pole cuttable to length, Cable management +/- 45° tilt 360° rotation, +/-5° yaw adjustment, 35kg max weight loading. Black and white powder coat - alternative colour options available.

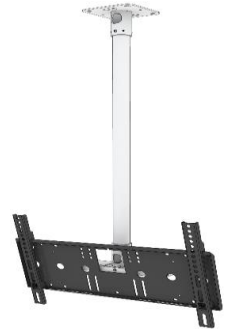
Product Code:
QC1832CM



Description: Piqo ceiling bracket for 18" – 39" displays Max weight loading 35kg.

1 metre drop TV ceiling mount (cuttable), 1 metre additional pole available - QCPM1MEXT see bottom of [page 58](#), VESA 200, 300, 400, 600x400, Universal up to 600mm x 400mm, 200-1060mm drop pole cuttable to length, Cable management TV can be padlocked, +/- 45° tilt 360° rotation +/-5° yaw adjustment. Black and white powder coat - alternative colour options available.

Product Code:
QC3265CM



Description: Piqo pedestal stand for 32" - 65" displays Max weight loading 50kg.

Classic desk top pedestal TV stand, VESA 75, 100, 200x100, 200, 300, 400, 600x400, 800x400, Universal up to 825mm x 425mm, 565mm max centre of fixing pattern. Smooth screen swivel $\pm 25^\circ$ left – right, height adjustable, two depth settings, cable management, rigid steel structure, base can be bolted down. Satin black finish. Large base suitable for vinyl branding.

Product Code:
QC3265DS



Description: Piqo extra large desk top or confidence monitor stand Max weight loading 135kg.

Extra large desk top pedestal TV stand or confidence monitor for the stage. VESA 200, 300, 400, 600x400 / 600 / 800x400 / 800x600 (landscape). Universal up to 815mm x 600mm. 135kg max weight loading. Tilts downwards 16°. Arms can be padlocked. Cable management. Rigid steel & aluminium structure. Satin black and satin silver finish.

Product Code:
QC5585DS





Piqo projector stands

Description: Piqo projector trolley

Adjustable height projector trolley with equipment shelf

12kg max weight loading.
Silver finish.

Product Code:

QCTROLLEYPROJ



Description: Piqo projector ceiling mount

Adjustable height projector trolley with equipment shelf

Universal short drop projector mount, 225mm drop from ceiling.
30° tilt - 10° yaw - 360° rotation.
300mm x 300mm fixing pattern.
Simple installation, 15kg weight limit.
Durable white powder coat finish.

Product Code:

QCPMSB – in Black
QCPMSW – in White



Description: Piqo projector ceiling mount

Universal 1 metre-drop projector ceiling mount (cuttable)

1 metre pole, cuttable to size, 1 metre additional pole available - QCPM1MEXT see bottom of page 58, 45° tilt angle, 5° yaw adjustment, 360° rotation, 316mm x 203mm max fixing pattern, Simple installation, Cable management through pole.
25kg weight limit.
Durable white powder coat finish.

Product Code:

QCPM11MW



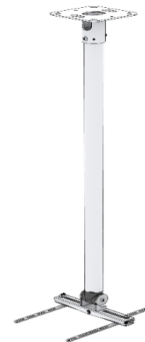
Description: Piqo projector ceiling mount

Universal 1 metre-drop projector ceiling mount (cuttable)

1 metre pole, cuttable to size, 1 metre additional pole available - QCPM1MEXT please see below, 30° tilt angle, 5° yaw adjustment, 360° rotation, 630mm x 325mm Max fixing pattern, Simple installation, Cable management through pole.
25kg weight limit.
Durable white powder coat finish.

Product Code:

QCPM21MW



Description: Piqo projector ceiling mount

Universal 1 metre-drop projector ceiling mount (cuttable)

One Metre Extension Pole, x1 2m Extension pole with joiners and fixings
Can be used in series up to 4metres total, Cuttable to length, Cable management through pole.
Durable white powder coat finish.

Product Code:

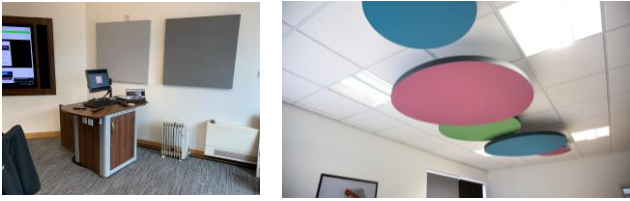
QCPM1MEXT





Comprehensive range available

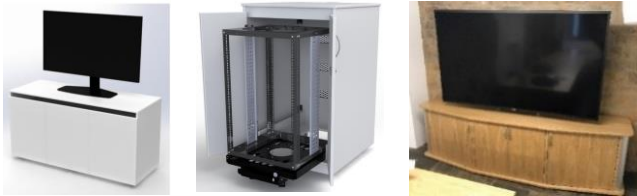
Book 1 - Acoustics



Book 2 & 3 - Lecterns



Book 4 – Cabinets & Credenzas



Book 5 – Tables & Desks



Book 6 – Control room & Enquiry Room



Book 7 – Media Walls & Screen Surrounds



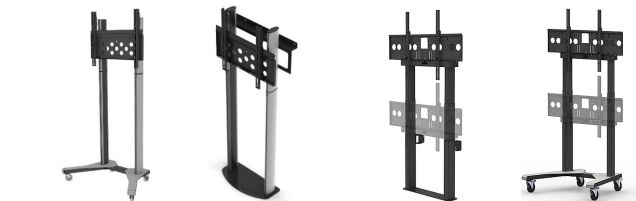
Book 8 – Collaboration Tables & Towers



Book 9 – Media & Signage Towers



Book 10 – Piqo Trolleys & Stands



Book 11 – Kaigi Booth's & Media Walls



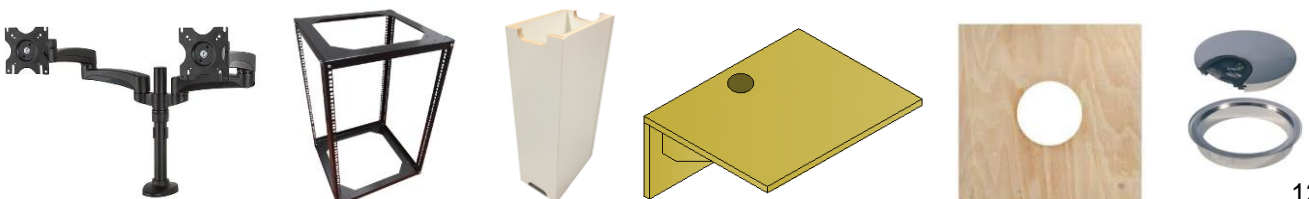
Book 12 – Connectivity



Book 13 – Task & Meeting Chairs



Book 14 - Peripherals





Description: Standard Melamine



Maple 0375



Windsor Oak 1929



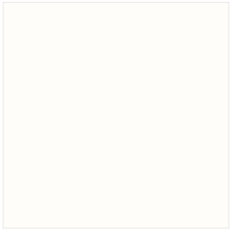
Bavaria Beech 0381



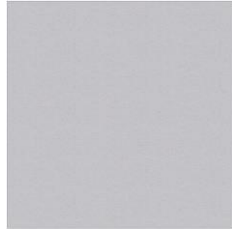
Aida Walnut H3704



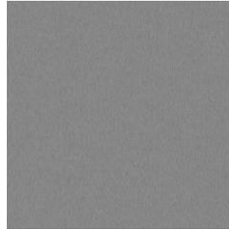
Verona Cherry H1615



White K101



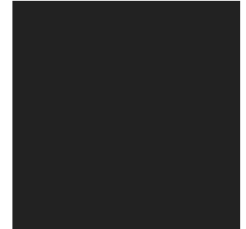
Stone Grey 0112



Dust Grey U732

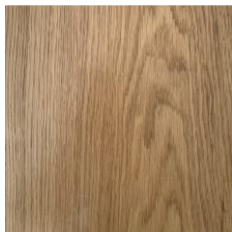


Graphite Grey 0162



Black 0190

Description: Real Wood Veneer



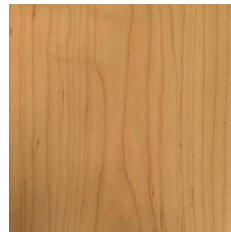
European Oak



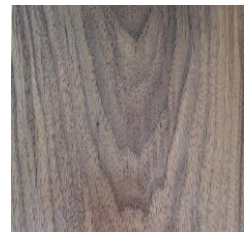
American White Oak



Crown Cut Ash



Crown Maple



Crown American Walnut

Quadra AV Furniture source the highest quality hardwoods and real wood veneers. The varying grain and figure of these woods genuinely emphasise the natural beauty and individuality of the material. No two pieces of timber are identical and there will be natural variations in the grain, knots and colouring. This arises from natural minerals in the wood.



If you have a specific finish in mind please contact us with details and we will source samples for you.

We work with all the main manufacturers including Kronospan, Egger and Formica.

We also work with specialist veneer companies who have a vast array of stock from exotic, bold, warm, fresh and modern veneers.

Decorative laminate is a mainstay of commercial interior design and Quadra can offer the latest designs and textures as well as classic best sellers.



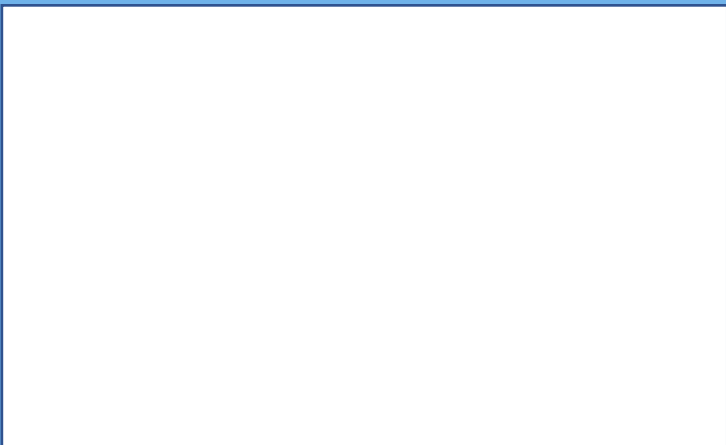
Over 26 years of experience within the audio visual furniture industry and with a reputation for being friendly and reliable to deal with, we treat every project with the same level of importance.

Our furniture is manufactured at our York facility which you are welcome to visit and see your project in the build process or just to have a look around.

You will be able to see the high level of investment in technology and the deep passion we have for what we do.

Quadra AV Furniture Ltd
Head Office : Glaisdale Road,
Northminster Business Park,
Upper Poppleton, York, YO26 6QT

Web - www.qavf.co.uk
Telephone - 01904 528 519
Email - enquiries@qavf.co.uk



Quadra Concepts UK Limited trading as Quadra AV Furniture is registered in England and Wales.
Reg No. 06322818 – VAT No. GB 916 3405 38